



COMPANY PROFILES

企业简介

宁波弗莱格液压有限公司成立于2010年04月；坐落于东海之滨—宁波，占地面积20000平方米；公司位于浙江省级工业园区宁波望春工业园区，是液压行业新兴的科技创新型企业。

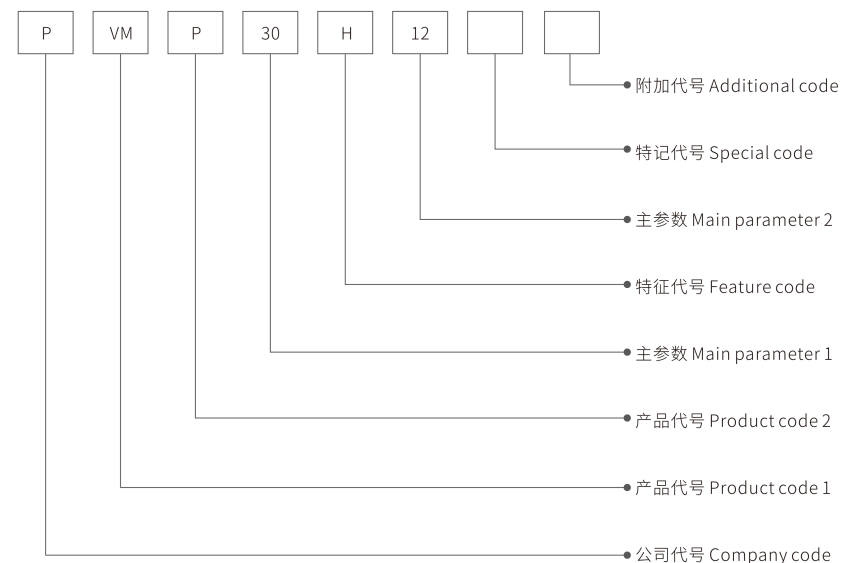
公司秉承创新设计、精益制造的产品理念，通过不断创新与发展壮大，确立以成为中国装备工业核心元件标杆企业为公司目标。公司成立以来一直贯彻“以人为本，不忘初心”的企业文化思想；推行以质量求生存、创新求发展、管理求效益的经营方针，通过十年多的积累沉淀，稳步发展，逐步形成具有设计、制造和拥有自主品牌的高新技术企业。公司产品广泛应用于工程机械、煤矿机械、港口机械、起重运输设备等液压系统。

NINGBO FLAG-UP HYDRAULIC CO., LTD was established in April 2010. Located on the coast of east China sea -- Ningbo, covering an area of 20,000 square meters; The company is located in the Zhejiang provincial industrial park, Ningbo Wangchun industrial park. Adhering to the product concept of innovative design and lean manufacturing, the company has established the company goal of becoming a benchmark enterprise of core components of China's equipment industry through continuous innovation and development. Since its establishment, the company has been implementing the corporate culture thought of "putting people first, never forgetting the original intention". We will carry out the business policy of pursuing survival through quality, innovation and development, and management and efficiency. With over ten years of accumulation and precipitation, we will steadily develop and gradually form a high-tech enterprise with design, manufacturing and independent brands. Our products are widely used in hydraulic systems such as engineering machinery, coal mine machinery, port machinery, lifting and transportation equipment.



订货代号 Order Code

编制说明 Explanation



1. 公司代号 Product code: P
2. 产品代号 Product code1: 整体式多路阀 integral multi-way valve VM; 片式多路阀 flat multi-way valve VS
3. 产品代号 Product code 2: 挖掘机 excavator EX; 压桩机 pile driver PD; 扒渣机 mucking loader RBC; 伸缩臂叉车 telescopic handler TH
4. 主参数 Main parameter 1: 通径 DN10, DN15, DN20, DN25, DN30, and DN40
5. 特征代号 Feature code:
 - H—公称压力 nominal pressure ≥ 31.5 MPa
 - M—25 MPa < 公称压力 nominal pressure < 31.5 MPa
 - N—公称压力 nominal pressure ≤ 25 MPa
 - S—串联 series connection
 - P—并联 parallel connection
 - SP—串并联 series & parallel connection
6. 主参数 Main parameter 2: 阀芯数码 spool number
7. 特记代号 Special code: 客户源码 customer source code
8. 附加代号 Additional code: 流水码 Serial No



PVS-EX15 系列 series

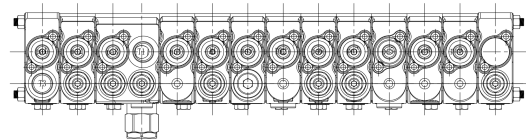
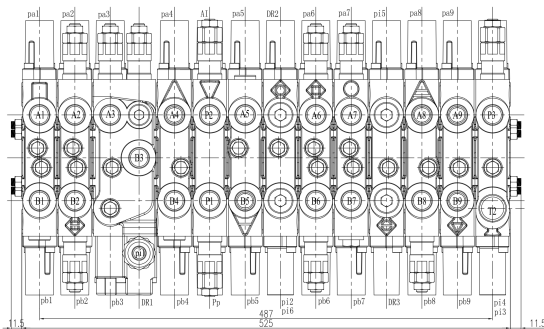
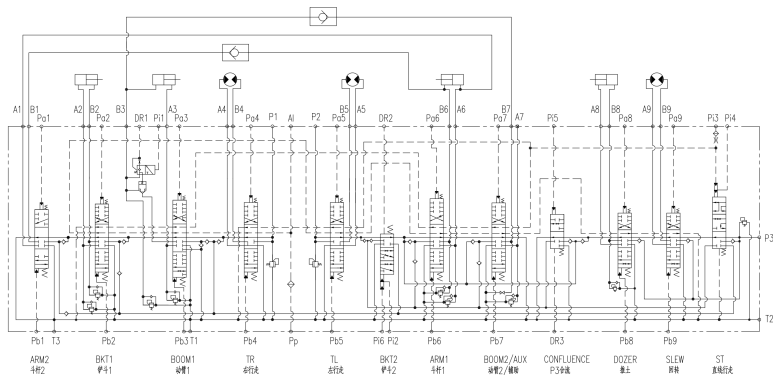
应用机型: 5-7.5T 挖掘机

Applicable model:

5T—7.5T excavator

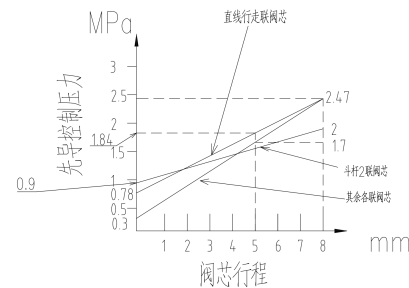


工作原理 Operating principle



技术参数 Technical parameters

- ◆ P1、P2、P3额定流量80L/min;
P1, P2, P3 nominal flow rate: 80 L/min.
- ◆ P1、P2、P3额定压力24.5MPa;
P1, P2, P3 nominal pressure: 24.5 MPa.
- ◆ A7口过载溢流阀设定压力17.5MPa, 其余油口设定压力27.9MPa;
Setting pressure: 17.5 MPa for overload relief valve at port A7; 27.9 MPa the rest.
- ◆ 使用油温范围-20°C-90°C, 瞬时最高温度100°C;
Oil temperature range: -20°C—90°C; maximum transient temperature: 100°C.
- ◆ 阀芯行程为8mm, 先导压力与阀芯行程关系如图中所示;
Spool stroke: 8 mm. Please see the diagram for the relationship between the pilot pressure and the spool stroke.



- ◆ 油口尺寸: T2为G3/4, A1~A9、B1~B9、P1~P3、T1、T3为G1/2, pa1~pa9、pb1~pb9、DR1、DR2、pi1~pi6、Pp、Al为G1/4。
Oil port size: G3/4 for T2; G1/2 for A1—A9, B1—B9, P1—P3, T1, and T3; G1/4 for pa1—pa9, pb1—pb9, DR1, DR2, pi1—pi6, Pp, and Al.

技术优势 Technical advantages

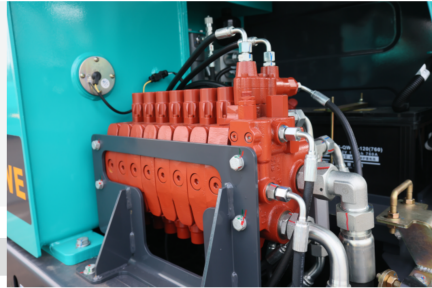
- ◆ 控制方式灵活, 可根据客户不同要求进行组合;
Flexible control mode for combination as customer required.
- ◆ 节流系统使用三泵恒功率控制, 节能高效;
Three-pump constant power control for the throttling system with energy saving and high efficiency.
- ◆ 复合动作协调性好、微动作性好;
Good coordination of compound actions and flexible micro-action.
- ◆ 沉降量小。
Small settlement.



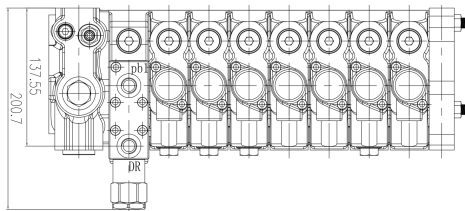
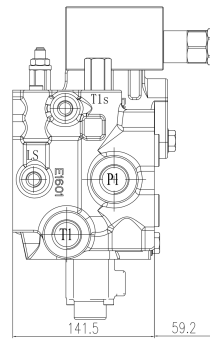
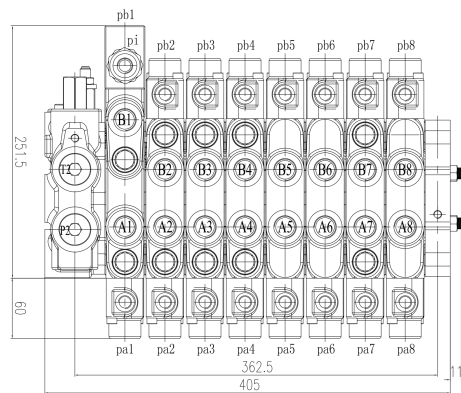
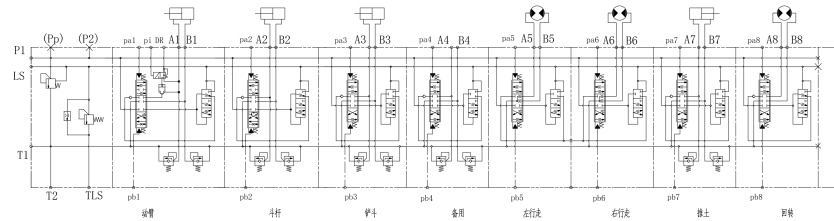
负载敏感系统多路阀 Multi-way Valve for Load Sensing System

PVS-EX16 系列 series

应用机型: 5-7.5T 挖掘机
Applicable model:
5T—7.5T excavator

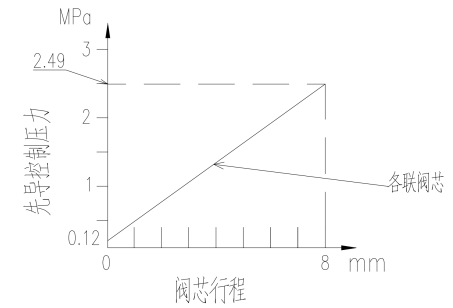


工作原理 Operating principle



技术参数 Technical parameters

- ◆ 额定流量 120L/min;
Nominal flow rate: 120 L/min.
- ◆ LS安全阀设定压力 23MPa;
LS safety valve setting pressure: 23 MPa.
- ◆ 卸荷阀设定压力 2.6MPa, 流量 15L/min;
Unloading valve setting pressure: 2.6 MPa; flow rate: 15 L/min.
- ◆ 使用油温范围 -20°C-90°C, 瞬时最高温度 100°C;
Oil temperature range: -20°C—90°C; maximum transient temperature: 100°C.
- ◆ T1口瞬时回油最大背压 1.5MPa, 正常使用背压 0.5MPa;
Maximum transient back pressure of the oil return at port T1: 1.5 MPa; normal back pressure: 0.5 MPa.
- ◆ 阀芯行程为 8mm, 先导压力与阀芯行程关系如图中所示;
Spool stroke: 8 mm. Please see the diagram for the relationship between the pilot pressure and the spool stroke.



- ◆ 油口尺寸: P1、P2、T1、T2为G3/4, A1~A8、B1~B8、PP为G1/2, pa1~pa8、pb1~pb8、DR、pi、T1s、Ls为G1/4。
Oil inlet size: G3/4 for P1, P2, T1, and T2; G1/2 for A1—A8, B1—B8, and PP; G1/4 for pa1—pa8, pb1—pb8, DR, pi, T1s, and Ls.

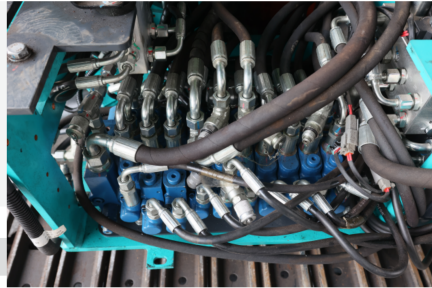
技术优势 Technical advantages

- ◆ 控制方式灵活, 可根据客户不同要求进行组合;
Flexible control mode for combination as customer required.
- ◆ 节能高效;
Energy saving and high efficiency.
- ◆ 复合动作协调性好、微动作性好;
Good coordination of compound actions and flexible micro-action.
- ◆ 沉降量小;
Small settlement.
- ◆ 便于售后维护。
Easy after-sales maintenance.

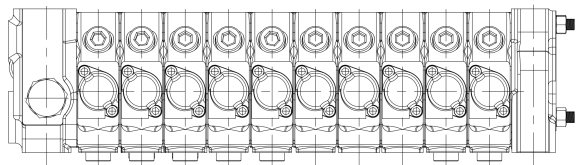
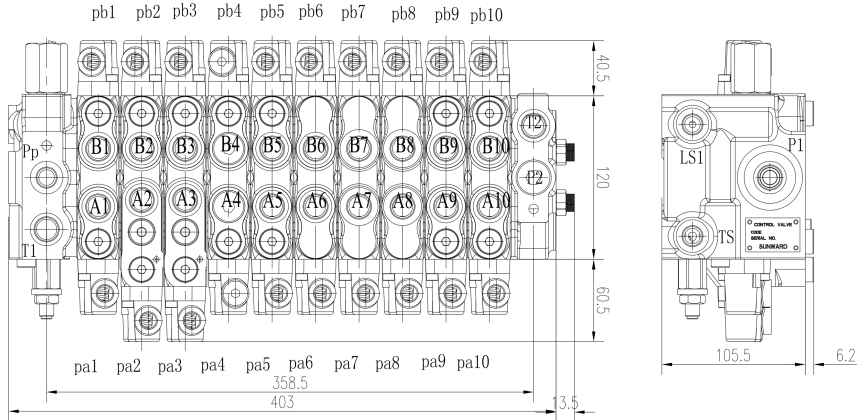
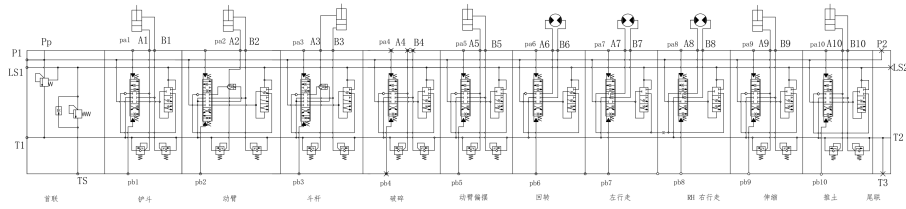


PVS-EX12 系列 series

应用机型: 4T及以下挖掘机
Applicable model:
4T and below excavator



工作原理 Operating principle



技术参数 Technical parameters

- ◆ 额定流量90L/min;
Nominal flow rate: 90 L/min.
- ◆ LS溢流阀设定压力22.5MPa;
LS relief valve setting pressure: 22.5 MPa.
- ◆ 无负载阀设定压力2.3MPa;
No-load valve setting pressure: 2.3 MPa.
- ◆ 使用油温范围-20°C-90°C, 瞬时最高温度100°C;
Oil temperature range: -20°C-90°C; maximum transient temperature: 100°C.
- ◆ TS口背压必须在0.2MPa以下;
Back pressure at port TS: below 0.2 MPa.
- ◆ 泄露油口T1口背压必须在2MPa以下;
Back pressure at the leakage port T1: below 2 MPa.
- ◆ 油口尺寸: A1~A9、B1~B9为G3/8, P1、P2、T1、T2、T3为G1/2, pa1~pa9、pb1~pb9、TS、Pp、Ls1、Ls2为G1/4。
Oil inlet size: G3/8 for A1-A9 and B1-B9; G1/2 for P1, P2, T1, T2, and T3; G1/4 for pa1-pa9, pb1-pb9, TS, Pp, Ls1, and Ls2.

技术优势 Technical advantages

- ◆ 控制方式灵活, 可根据客户不同要求进行组合;
Flexible control mode for combination as customer required.
- ◆ 节能高效;
Energy saving and high efficiency.
- ◆ 复合动作协调性好、微动作性好;
Good coordination of compound actions and flexible micro-action.
- ◆ 沉降量小;
Small settlement.
- ◆ 便于售后维护。
Easy after-sales maintenance.



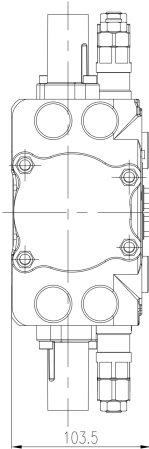
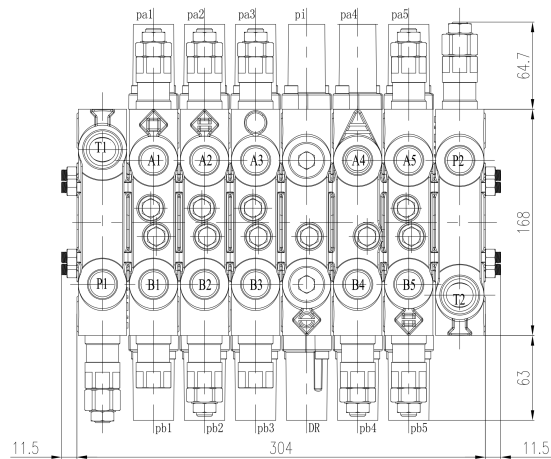
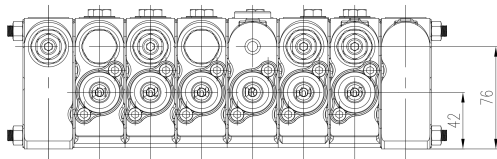
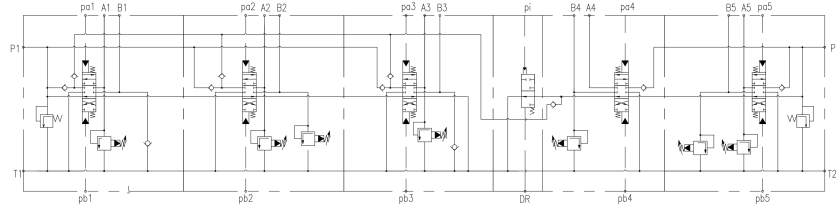
伸缩臂叉装车多路阀 Multi-way valve for telescopic handler

PVS-TH15 系列 series

应用机型: 伸缩臂叉装车
Applicable model:
telescopic handler

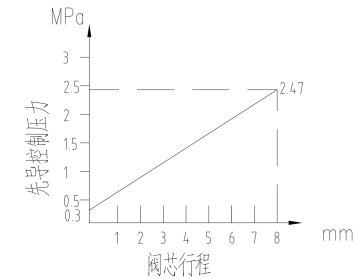


工作原理 Operating principle



技术参数 Technical parameters

- ◆ P1、P2额定流量50L/min, 额定压力24MPa;
P1, P2 nominal flow: 50 L/min; nominal pressure 24 MPa.
- ◆ 所有油口过载溢流阀设定压力26MPa, 设定流量20L/min;
Overload relief valve setting pressure: 26 MPa; setting flow rate: 20 L/min.
- ◆ 使用油温范围-20°C-90°C, 瞬时最高温度100°C;
Oil temperature range: -20°C-90°C; maximum transient temperature: 100°C.
- ◆ 瞬时回油最大背压1.5MPa, 正常使用背压0.34MPa;
Maximum transient back pressure of the oil return: 1.5 MPa; normal back pressure: 0.34 MPa.
- ◆ O型机能油口泄漏量: 2-12ml/min;
O-type oil port leakage: 2 ml/min-12 ml/min.
- ◆ 阀芯行程为8mm, 先导压力与阀芯行程关系如图所示;
Spool stroke: 8 mm. Please see the diagram for the relationship between the pilot pressure and the spool stroke.



- ◆ 油口尺寸: T1、T2为G3/4, A1~A5、B1~B5、P1、P2为G1/2, pa1~pa5、pb1~pb5、DR、pi为G1/4。
Oil inlet size: G3/4 for T1 and T2; G1/2 for A1-A5, B1-B5, P1, and P2; G1/4 for pa1-pa5, pb1-pb5, DR, and pi.

技术优势 Technical advantages

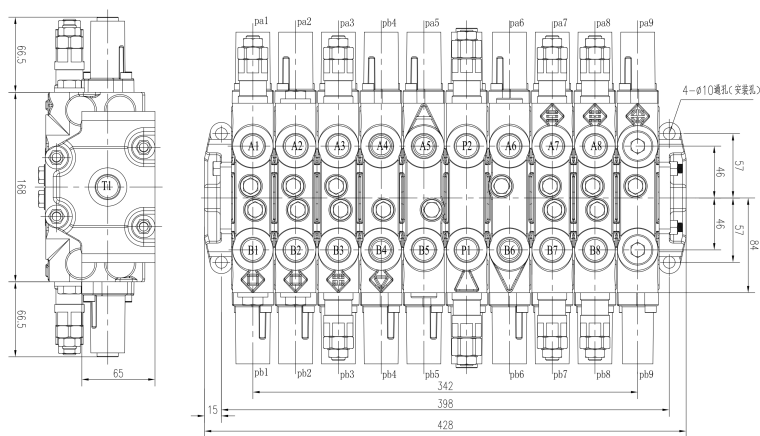
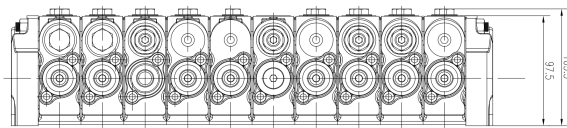
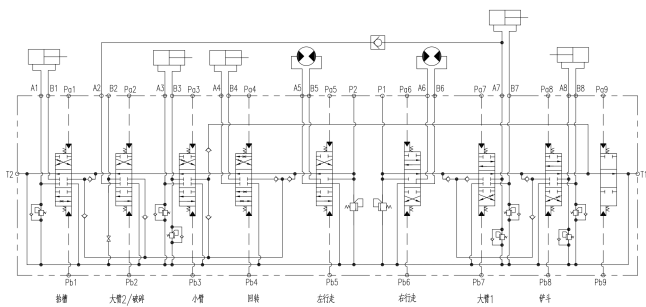
- ◆ 控制方式灵活, 可根据客户不同要求进行组合;
Flexible control mode for combination as customer required.
- ◆ 节能高效;
Energy saving and high efficiency.
- ◆ 复合动作协调性好、微动作性好;
Good coordination of compound actions and flexible micro-action.
- ◆ 便于售后维护。
Easy after-sales maintenance.

PVS-RBC15 系列 series

应用机型: 扒渣机
Applicable model:
mucking loader

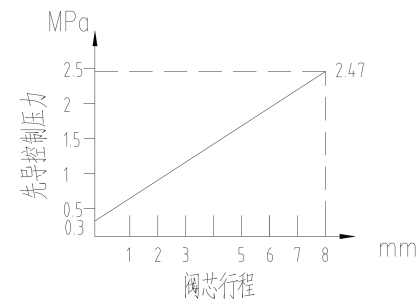


工作原理 Operating principle



技术参数 Technical parameters

- ◆ P1、P2额定流量60L/min;
P1, P2 nominal flow rate: 60 L/min.
- ◆ 主溢流阀设定压力:P1、P2: 22±0.5MPa, 设定流量60L/min;
Main relief valve setting pressure: P1, P2: 22 MPa±0.5 MPa; setting flow: 60 L/min.
- ◆ 使用液压油类型:ISO VG46;
Type of hydraulic oil: ISO VG46.
- ◆ 使用油温范围-20°C-90°C, 瞬时最高温度100°C;
Oil temperature range: -20°C—90°C; maximum transient temperature: 100°C.
- ◆ 最大会有背压: 峰值: 1.5MPa, 正常: 0.34MPa;
Back pressure: peak: 1.5 MPa; normal: 0.34 MPa.
- ◆ 阀芯行程为8mm, 先导压力与阀芯行程关系如图中所示;
Spool stroke: 8 mm. Please see the diagram for the relationship between the pilot pressure and the spool stroke.



- ◆ 油口尺寸: A1~A8、B1~B8、P1、P2、T1、T2为G1/2, pa1~pa8、pb1~pb8为G1/4。
Oil inlet size: G1/2 for A1—A8, B1—B8, P1, P2, T1, and T2; G1/4 for pa1—pa8 and pb1—pb8.z

技术优势 Technical advantages

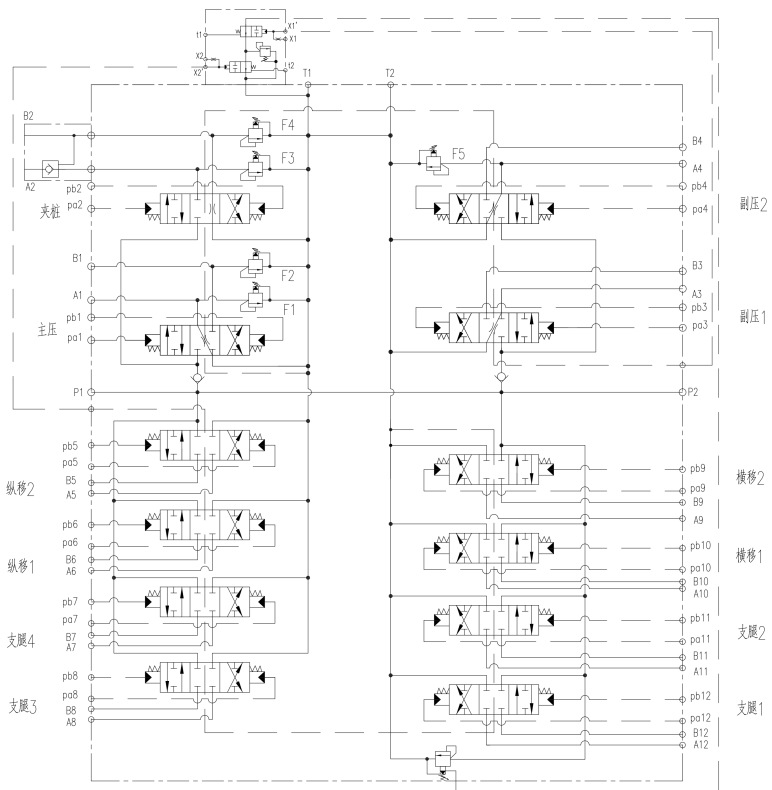
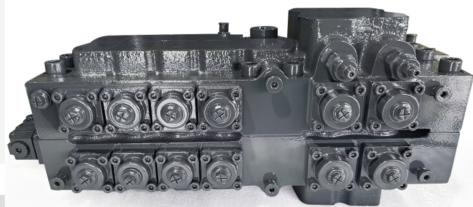
- ◆ 控制方式灵活, 可根据客户不同要求进行组合;
Flexible control mode for combination as customer required.
- ◆ 节能高效;
Energy saving and high efficiency.
- ◆ 复合动作协调性好、微动作性好;
Good coordination of compound actions and flexible micro-action.
- ◆ 便于售后维护。
Easy after-sales maintenance.



PVM-PD30/25 系列 series

应用机型: 桩机
Applicable model: pile driver

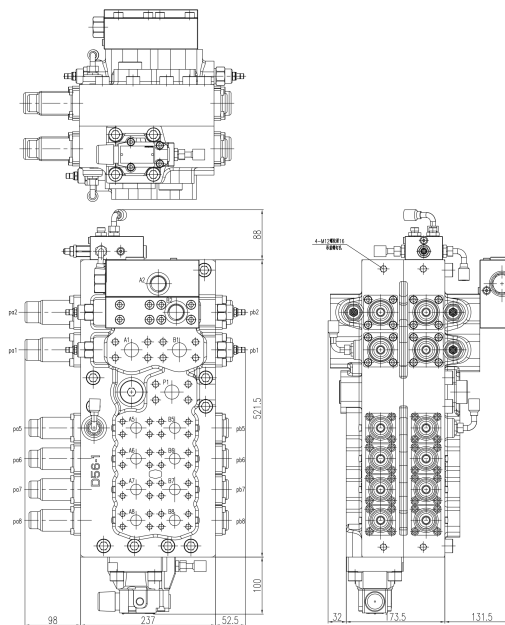
工作原理 Operating principle



技术参数 Technical parameters

- ◆ P1、P2额定流量200L/min;;
P1, P2 nominal flow rate: 200 L/min.
- ◆ P1、P2额定压力35MPa;
P1, P2 nominal pressure: 35 MPa.
- ◆ 使用油温范围-20°C-90°C, 瞬时最高温度100°C。
Oil temperature range: -20°C—90°C; maximum transient temperature: 100°C.

外形尺寸 Overall dimensions

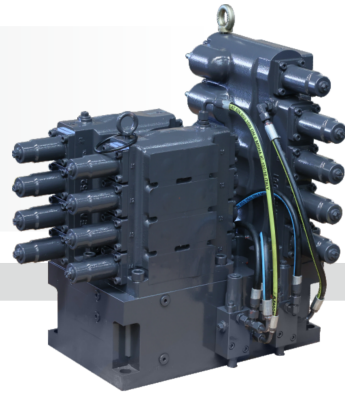


技术优势 Technical advantages

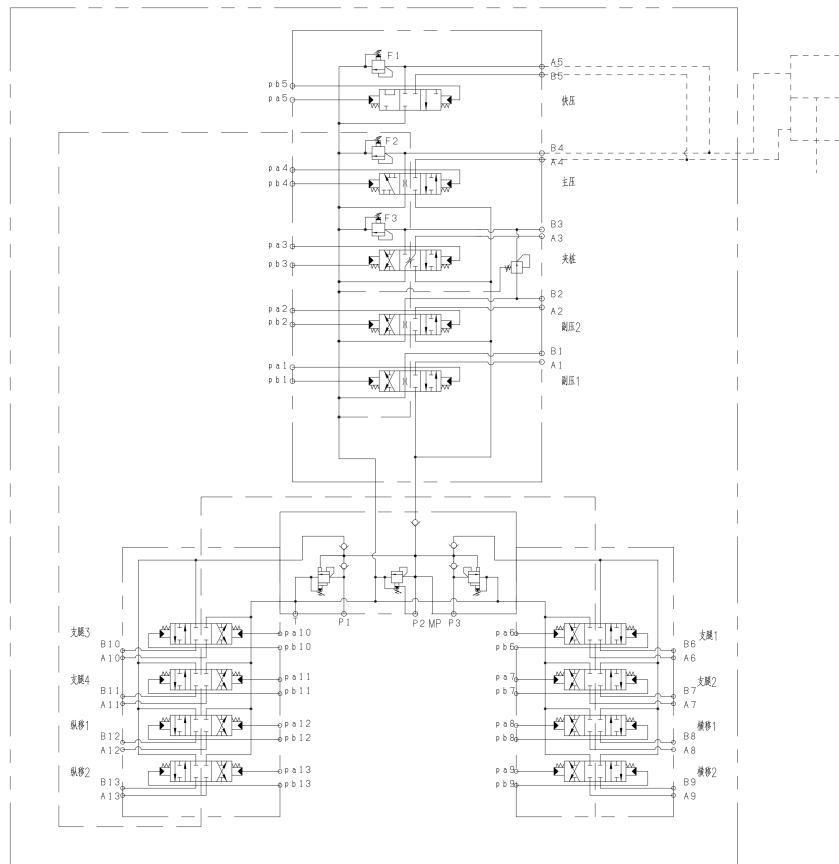
- ◆ 采用铸造流道, 优化的内部流道, 更低的压力损失;
Optimized internal casting runner with low pressure loss.
- ◆ 整体集成, 管路布置更方便, 售后维护更便利;
Overall integration with convenient pipeline layout and easy after-sales maintenance.
- ◆ 节能高效。
Energy saving and high efficiency.

PVM-PD-35/30 系列 series

应用机型: 桩机
 Applicable model: pile driver



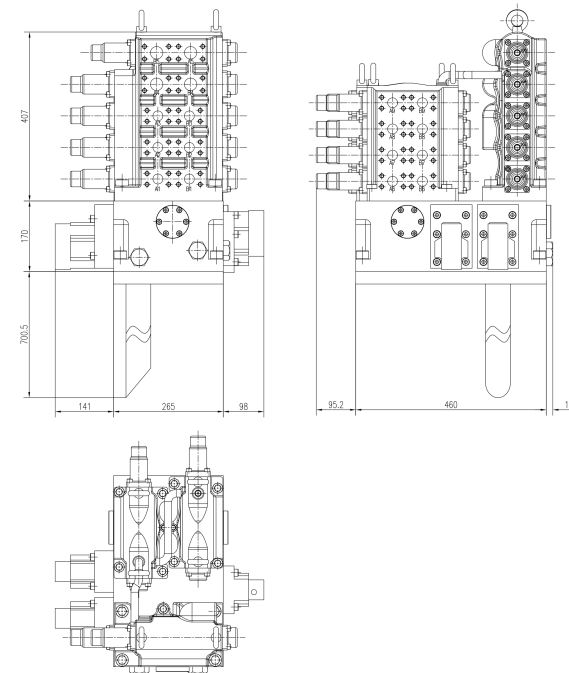
工作原理 Operating principle



技术参数 Technical parameters

- ◆ P1、P2、P3额定流量150L/min;
P1, P2, P3 nominal flow rate: 150 L/min.
- ◆ P1、P2、P3额定压力30MPa;
P1, P2, P3 nominal pressure: 30 MPa.
- ◆ 使用油温范围-20°C-90°C, 瞬时最高温度100°C。
Oil temperature range: -20°C-90°C; maximum transient temperature: 100°C.

外形尺寸 Overall dimensions

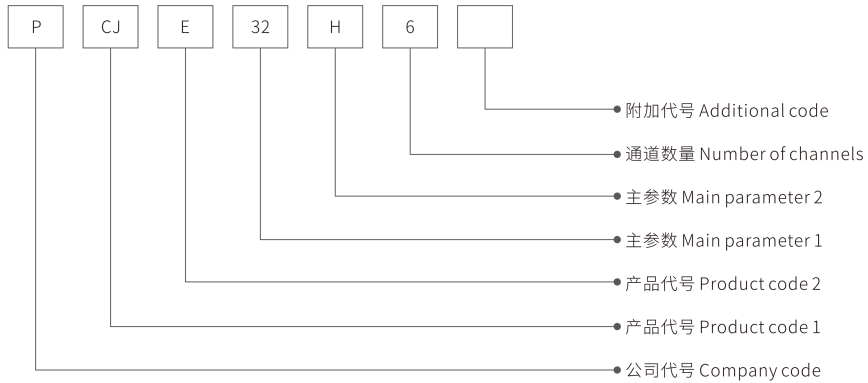


技术优势 Technical advantages

- ◆ 采用铸造流道, 优化的内部流道, 更低的压力损失;
Optimized internal casting runner with low pressure loss.
- ◆ 整体集成, 管路布置更方便, 售后维护更便利;
Overall integration with convenient pipeline layout and easy after-sales maintenance.
- ◆ 节能高效。
Energy saving and high efficiency.



编制说明 Explanation



1、公司代号 Product code: P

2、产品代号 Product code 1: 中央回转接头 central swivel joint: CJ

3、产品代号 Product code 2: 挖掘机EX; 轮式挖掘机WEX; 旋挖钻机: DR; 高空作业车: AMP
excavator: EX; wheel excavator: WEX; rotary drilling rig: DR; aerial work platform truck: AMP

4、主参数 Main parameter 1: 最大通径8 12 15 20 25 32
maximum diameter: 8, 12, 15, 20, 25, 32

5、主参数 Main parameter 2: 压力等级: H: 高压 ≥ 30 MPa N: 中压 ≤ 30 MPa
pressure grade: H: high pressure ≥ 30 Mpa N: medium pressure ≤ 30 MPa

6、通道数量 Number of channels: 6/7/8

7、附加代号 Additional code: 流水码 Serial No.

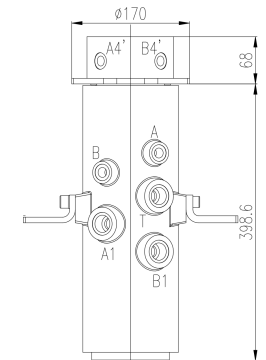
PCJ-AMP系列 series

应用机型: 高空液控平台车

Applicable model: aerial hydraulic control platform truck



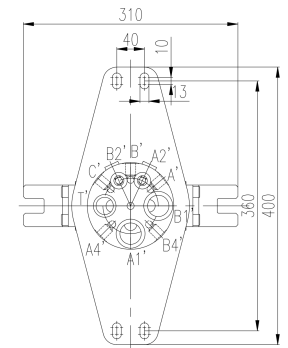
工作原理 Operating principle



技术参数 Technical parameters

- ◆ 使用油温范围: $-30^{\circ}\text{C} - 100^{\circ}\text{C}$;
Range of temperature of oil used: $-30^{\circ}\text{C} - 100^{\circ}\text{C}$.
- ◆ 油液清洁度推荐: NAS9级以内;
Recommended oil cleanliness: NAS grade 9 or less.
- ◆ 油口参数 Oil inlet parameters:

油口 Oil inlet	油口尺寸 Oil inlet size	流量 Flow (L/min)	工作压力 Operating pressure (Mpa)
A1', B1'	M33X2 ED	100	30
A2', B2', A2'', B2''	M16X1.5 ED	20	30
A, B, C, A4 B4, A', B', C' A4', B4'	M16X1.5 ED	10	30
T, T'	M26X1.5 ED	30	5



技术优势 Technical advantages

- ◆ 按需定制, 快速响应客户需求;
The product can be customized as needed for quick response to customer needs.
- ◆ 壳体采用铸造成型, 压力损失小;
The shell is cast with low pressure loss.
- ◆ 芯轴表面高频淬火, 耐磨性高, 启动转矩损失小;
The surface of the core shaft is processed through high frequency quenching, with high wear resistance and small loss of starting torque.
- ◆ 采用进口旋转密封件, 可靠耐用。
Imported rotary seals are used, which are reliable and durable.



高空电控平台车系列

Aerial Electronic Control Platform Truck Series

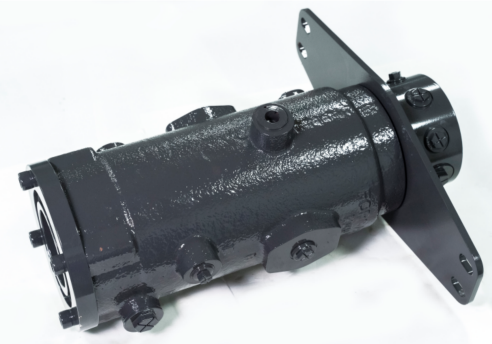
微型挖掘机系列

Mini Excavator Series

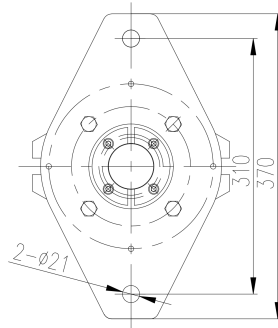
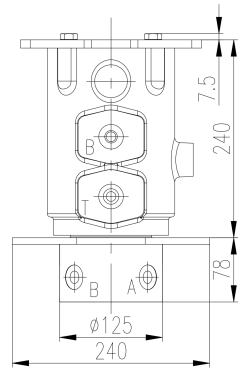
PCJ-AMP系列 series

应用机型: 高空电控平台车

Applicable model: aerial electronic control platform truck



工作原理 Operating principle



技术参数 Technical parameters

- ◆ 使用油温范围: -30°C-100°C;
Range of temperature of oil used: -30°C-100°C.
- ◆ 油液清洁度推荐: NAS9级以内;
Recommended oil cleanliness: NAS grade 9 or less.
- ◆ 油口参数 Oil inlet parameters:

油口 Oil inlet	油口尺寸 Oil inlet size	流量 Flow (L/min)	工作压力 Operating pressure (Mpa)
A, B	G3/8ED	20	210
P, T	G3/8ED	20	210

技术优势 Technical advantages

- ◆ 按需定制, 快速响应客户需求;
The product can be customized as needed for quick response to customer needs.
- ◆ 壳体采用铸造成型, 压力损失小;
The shell is cast with low pressure loss.
- ◆ 芯轴表面高频淬火, 耐磨性高, 启动力矩损失小;
The surface of the core shaft is processed through high frequency quenching, with high wear resistance and small loss of starting torque.
- ◆ 采用进口旋转密封件, 可靠耐用;
Imported rotary seals are used, which are reliable and durable.
- ◆ 可按需求集成电滑环。
Electric slip rings can be integrated as needed.

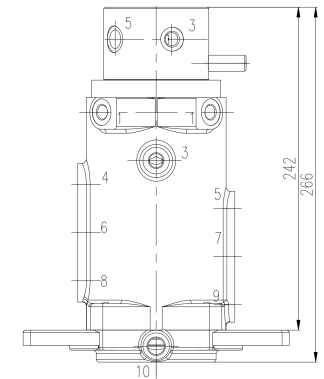
PCJ-EX 系列 series

应用机型: 微型挖掘机

Applicable model: mini excavator



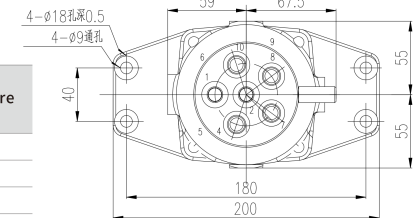
工作原理 Operating principle



技术参数 Technical parameters

- ◆ 使用油温范围: -30°C-100°C;
Range of temperature of oil used: -30°C-100°C.
- ◆ 油液清洁度推荐: NAS9级以内;
Recommended oil cleanliness: NAS grade 9 or less.
- ◆ 油口参数 Oil inlet parameters:

油口 Oil inlet	油口尺寸 Oil inlet size	流量 Flow (L/min)	工作压力 Operating pressure (Mpa)
1	M12X1.5ED	10	4
2,3	M12X1.5ED	12.7	25
4,5	M14X1.5ED	20	25
6,7,8,9	M14X1.5ED	30	25
10	M14X1.5ED	10	1



技术优势 Technical advantages

- ◆ 按需定制, 快速响应客户需求;
The product can be customized as needed for quick response to customer needs.
- ◆ 壳体采用铸造成型, 压力损失小;
The shell is cast with low pressure loss.
- ◆ 芯轴表面高频淬火, 耐磨性高, 启动力矩损失小;
The surface of the core shaft is processed through high frequency quenching, with high wear resistance and small loss of starting torque.
- ◆ 采用进口旋转密封件, 可靠耐用。
Imported rotary seals are used, which are reliable and durable.

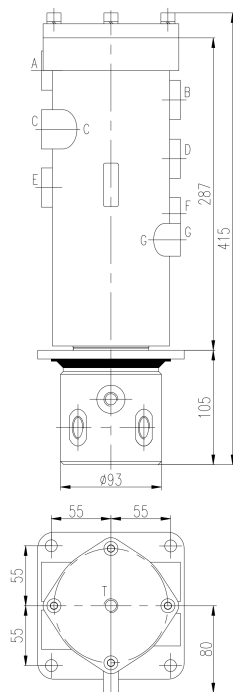


PCJ-AMP系列 series

应用机型:小型挖掘机
Applicable model:small excavator



工作原理 Operating principle



技术参数 Technical parameters

- ◆ 使用油温范围-30°C-100°C;
Range of temperature of oil used: -30°C—100°C.
- ◆ 油液清洁度推荐:NAS9级以内;
Recommended oil cleanliness: NAS grade 9 or less.
- ◆ 油口参数 Oil inlet parameters:

油口 Oil inlet	油口尺寸 Oil inlet size	流量 Flow (L/min)	工作压力 Operating pressure (Mpa)
A, B, C, D	G1/2ED	80	28
E, F	G3/8ED	40	28
G	G1/4ED	20	5
T	G3/8ED	20	2

技术优势 Technical advantages

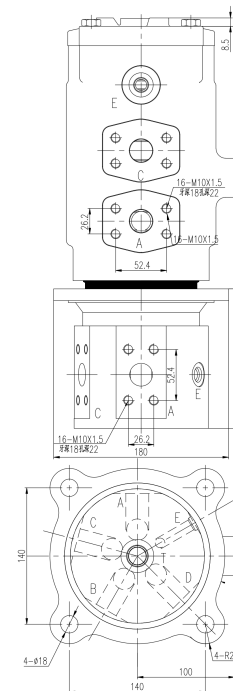
- ◆ 按需定制,快速响应客户需求;
The product can be customized as needed for quick response to customer needs.
- ◆ 壳体采用铸造成型,压力损失小;
The shell is cast with low pressure loss.
- ◆ 芯轴表面高频淬火,耐磨性高,启动力矩损失小;
The surface of the core shaft is processed through high frequency quenching, with high wear resistance and small loss of starting torque.
- ◆ 采用进口旋转密封件,可靠耐用;
Imported rotary seals are used, which are reliable and durable.

PCJ-EX 系列 series

应用机型:中型挖掘机
Applicable model:medium excavator



工作原理 Operating principle



技术参数 Technical parameters

- ◆ 使用油温范围-30°C-100°C;
Range of temperature of oil used: -30°C—100°C.
- ◆ 油液清洁度推荐:NAS9级以内;
Recommended oil cleanliness: NAS grade 9 or less.
- ◆ 油口参数 Oil inlet parameters:

油口 Oil inlet	油口尺寸 Oil inlet size	流量 Flow (L/min)	工作压力 Operating pressure (Mpa)
A, B, C, D	1"法兰 flange	260	30
E	G1/4EO	6	4
T	G1/2EO	20	0.3

技术优势 Technical advantages

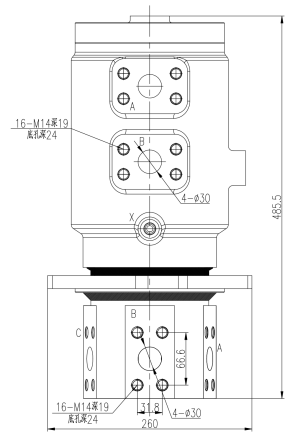
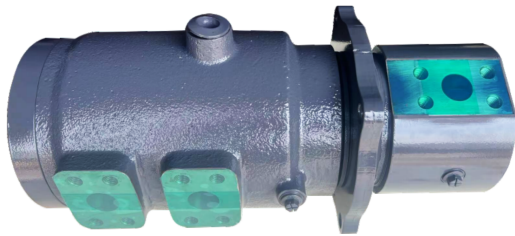
- ◆ 按需定制,快速响应客户需求;
The product can be customized as needed for quick response to customer needs.
- ◆ 壳体采用铸造成型,压力损失小;
The shell is cast with low pressure loss.
- ◆ 芯轴表面高频淬火,耐磨性高,启动力矩损失小;
The surface of the core shaft is processed through high frequency quenching, with high wear resistance and small loss of starting torque.
- ◆ 采用进口旋转密封件,可靠耐用。
Imported rotary seals are used, which are reliable and durable.



PCJ-EX 系列 series

应用机型: 大型挖掘机
Applicable model: large excavator

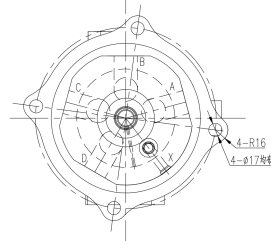
工作原理 Operating principle



技术参数 Technical parameters

- ◆ 使用油温范围: -30°C-100°C;
Range of temperature of oil used: -30°C—100°C.
- ◆ 油液清洁度推荐: NAS9级以内;
Recommended oil cleanliness: NAS grade 9 or less.
- ◆ 油口参数 Oil inlet parameters:

油口 Oil inlet	油口尺寸 Oil inlet size	流量 Flow (L/min)	工作压力 Operating pressure (Mpa)
X, X1, X2	G1/4EO	15	25
A, B, C, D	1-1/4"法兰 flange	450	37
T	G1EO	37	0.3



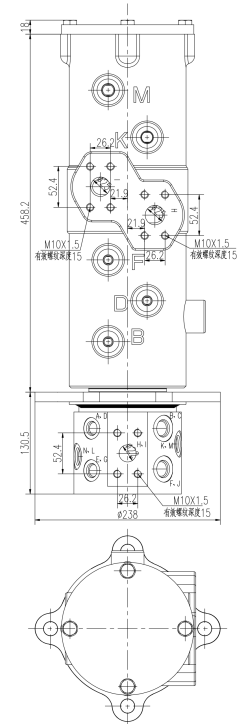
技术优势 Technical advantages

- ◆ 按需定制, 快速响应客户需求;
The product can be customized as needed for quick response to customer needs.
- ◆ 壳体采用铸造成型, 压力损失小;
The shell is cast with low pressure loss.
- ◆ 芯轴表面高频淬火, 耐磨性高, 启动力矩损失小;
The surface of the core shaft is processed through high frequency quenching, with high wear resistance and small loss of starting torque.
- ◆ 采用进口旋转密封件, 可靠耐用;
Imported rotary seals are used, which are reliable and durable.

PCJ-WEX 系列 series

应用机型: 轮式挖掘机
Applicable model: wheel excavator

工作原理 Operating principle



技术参数 Technical parameters

- ◆ 使用油温范围: -20°C-90°C;
Range of temperature of oil used: -20°C—90°C.
- ◆ 油液清洁度推荐: NAS9级以内;
Recommended oil cleanliness: NAS grade 9 or less.
- ◆ 油口参数 Oil inlet parameters:

油口 Oil inlet	油口尺寸 Oil inlet size	流量 Flow (L/min)	工作压力 Operating pressure (Mpa)
H, I	1" 寸法兰 flange	200	32
K, M	G1/2	140	32
J, L	G1/2	50	20
B, D, F	G1/2	50	8
A, C, E, G	G3/8	50	4
N	G1/2	10	0.8

技术优势 Technical advantages

- ◆ 按需定制, 快速响应客户需求;
The product can be customized as needed for quick response to customer needs.
- ◆ 壳体采用铸造成型, 压力损失小;
The shell is cast with low pressure loss.
- ◆ 芯轴表面高频淬火, 耐磨性高, 启动力矩损失小;
The surface of the core shaft is processed through high frequency quenching, with high wear resistance and small loss of starting torque.
- ◆ 采用进口旋转密封件, 可靠耐用。
Imported rotary seals are used, which are reliable and durable.
- ◆ 可按需求集成电滑环。
Electric slip rings can be integrated as needed.



旋挖液控钻机系列

Hydraulic Control Rotary Drilling Rig Series

旋挖电控钻机系列

Electric Control Rotary Drilling Rig Series

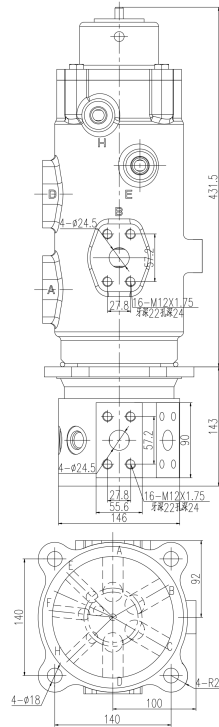
PCJ-DR 系列 series

应用机型:旋挖液控钻机

Applicable model:hydraulic control rotary drilling rig



工作原理 Operating principle



技术参数 Technical parameters

- ◆ 使用油温范围-20°C-90°C;
Range of temperature of oil used: -20°C—90°C.
- ◆ 油液清洁度推荐:NAS9级以内;
Recommended oil cleanliness: NAS grade 9 or less.
- ◆ 油口参数 Oil inlet parameters:

油口 Oil inlet	油口尺寸 Oil inlet size	流量 Flow (L/min)	工作压力 Operating pressure (Mpa)
A, B, C, D	1" 寸法兰 flange	320	35
E, F	G1/2	100	35
G	M16×1.5	10	4
H	G1/2	100	4

技术优势 Technical advantages

- ◆ 按需定制,快速响应客户需求;
The product can be customized as needed for quick response to customer needs.
- ◆ 壳体采用铸造成型,压力损失小;
The shell is cast with low pressure loss.
- ◆ 芯轴表面高频淬火,耐磨性高,启动力矩损失小;
The surface of the core shaft is processed through high frequency quenching, with high wear resistance and small loss of starting torque.
- ◆ 采用进口旋转密封件,可靠耐用;
Imported rotary seals are used, which are reliable and durable.

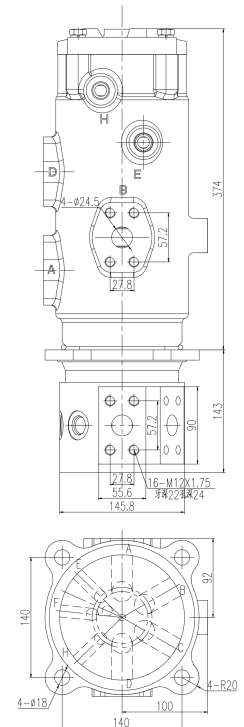
PCJ-DR 系列 series

应用机型:旋挖电控钻机

Applicable model:electric control rotary drilling rig series



工作原理 Operating principle



技术参数 Technical parameters

- ◆ 使用油温范围-20°C-90°C;
Range of temperature of oil used: -20°C—90°C.
- ◆ 油液清洁度推荐:NAS9级以内;
Recommended oil cleanliness: NAS grade 9 or less.
- ◆ 油口参数 Oil inlet parameters:

油口 Oil inlet	油口尺寸 Oil inlet size	流量 Flow (L/min)	工作压力 Operating pressure (Mpa)
A, B, C, D	1" 寸法兰 flange	320	35
E, F	G1/2	100	35
G	M16×1.5	10	4
H	M22×1.5	100	4
T	导孔线 Guide hole wire		

技术优势 Technical advantages

- ◆ 按需定制,快速响应客户需求;
The product can be customized as needed for quick response to customer needs.
- ◆ 壳体采用铸造成型,压力损失小;
The shell is cast with low pressure loss.
- ◆ 芯轴表面高频淬火,耐磨性高,启动力矩损失小;
The surface of the core shaft is processed through high frequency quenching, with high wear resistance and small loss of starting torque.
- ◆ 采用进口旋转密封件,可靠耐用。
Imported rotary seals are used, which are reliable and durable.
- ◆ 可按需求集成电滑环。
Electric slip rings can be integrated as needed.