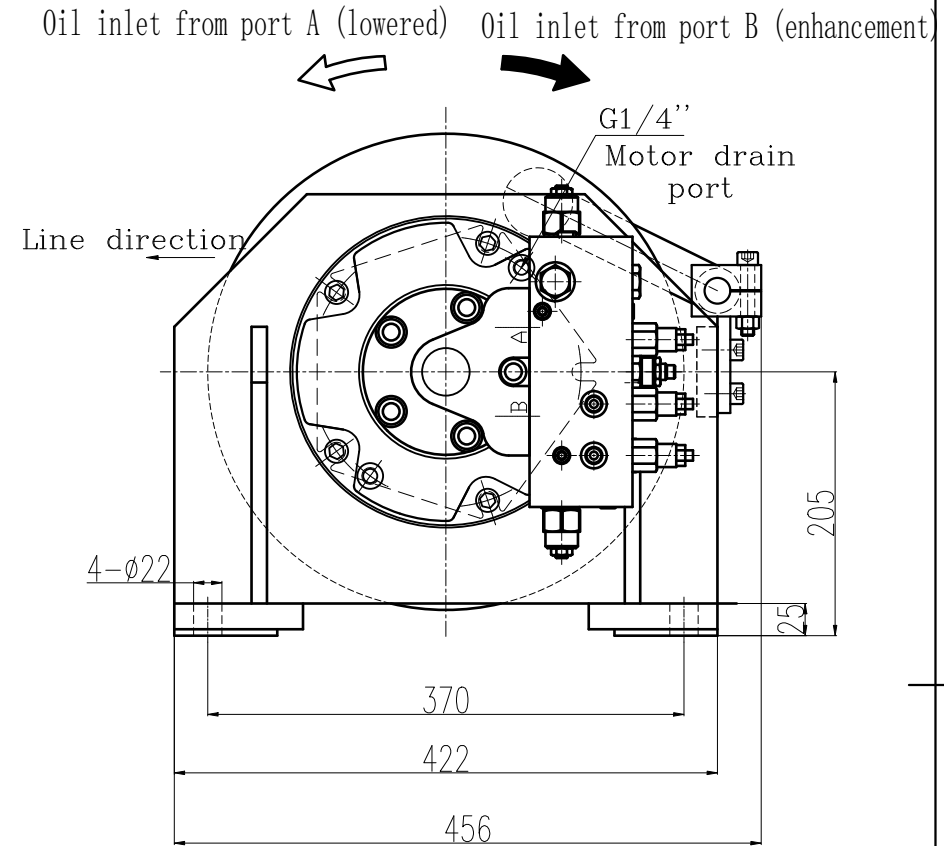
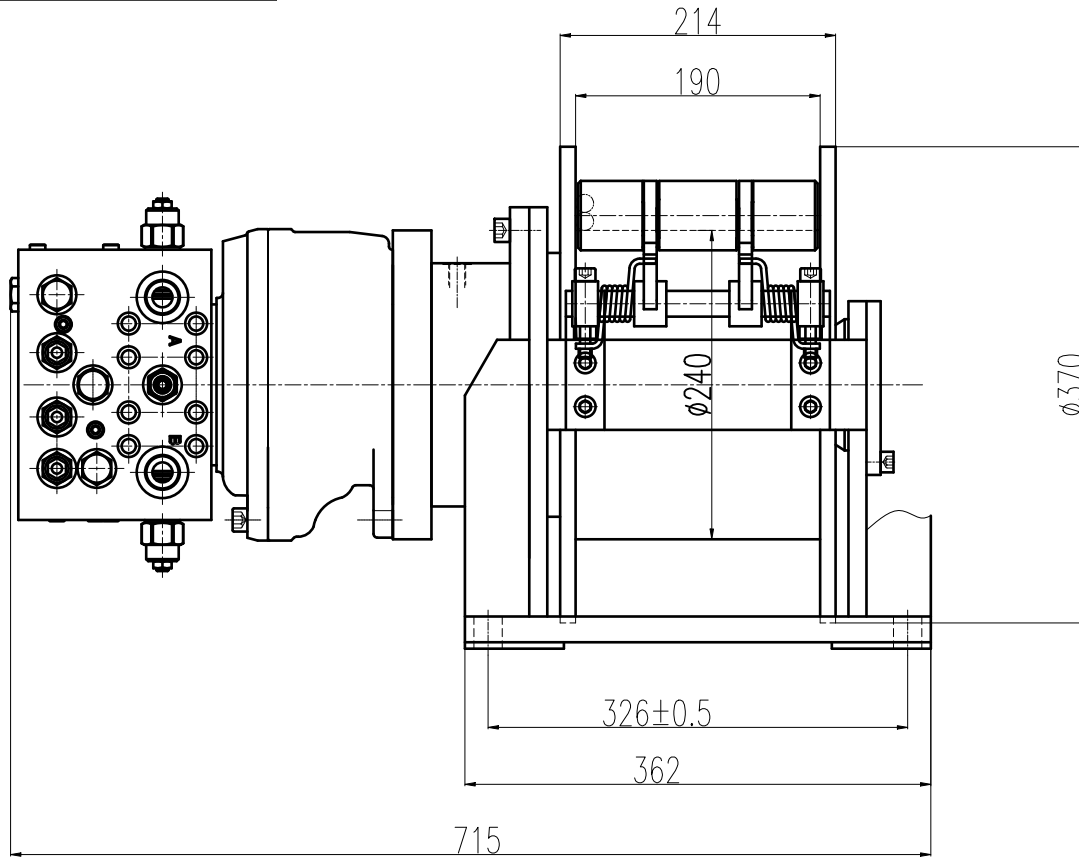
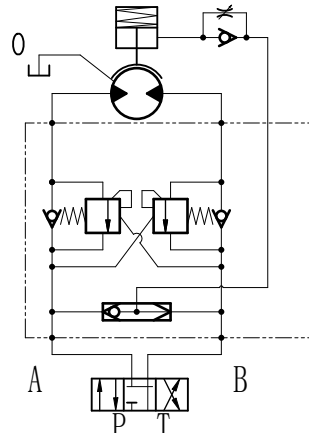


79L0010918



Hydraulic schematic diagram



Technical parameters of winch

借通用件登记	Technical parameters of winch	
描图	Second layer tension (KN)	20
	First rope speed (m/min)	18
校核	Rated working pressure (MPa)	14
	Rope diameter (mm)	14
	Number of rope layers (layers)	2
旧版图总号	Rope capacity of drum (m)	20(excluding 3 loops of safety rope)
	Total displacement (ml/r)	1727
签字	Recommended system pump flow(L/min)	43.3
	Reduction type number	FC2.5(i=5.5)
日期	Static braking torque (N.m)	780
	Brake opening pressure (MPa)	1.8-2.2
	Hydraulic motor type	INM1-320

				FJ2.5-20-20-14-ZP			Ningbo Flag-up Hydraulic flag-up
mark	number	changed	file number	signature	date	20Kn hydraulic winch	
designer		approver		pattern mark	weight	proportion	1:4
inspector							
craft							816010076
standard		date		version	visual angle	⊕ ⊙	