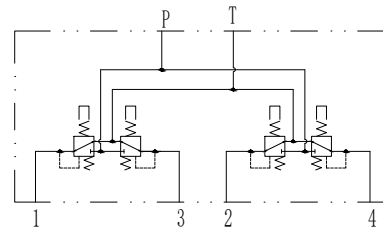
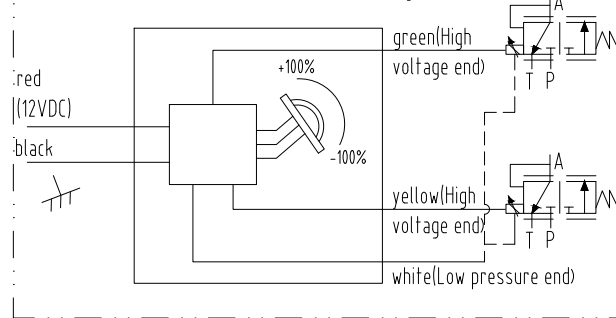


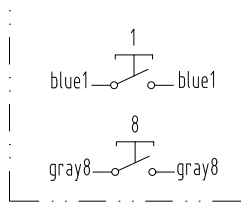
Hydraulic schematic diagram



Hall indicator wheel diagram

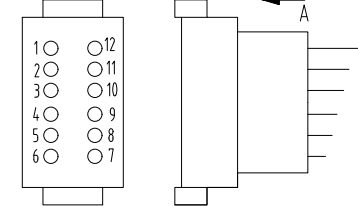


Push-button switch diagram

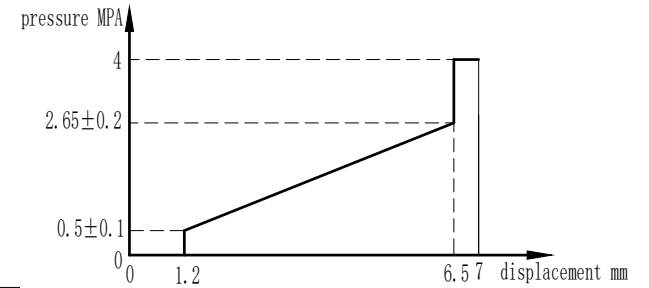


1	red	12	null
2	black	11	null
3	yellow	10	null
4	green	9	gray8
5	white	8	gray8
6	blue1	7	blue1

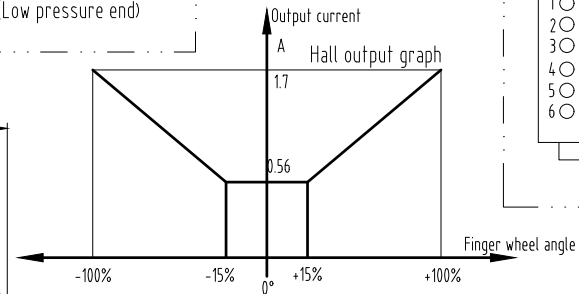
A-direction



Connector: Deutsch DT04-12P

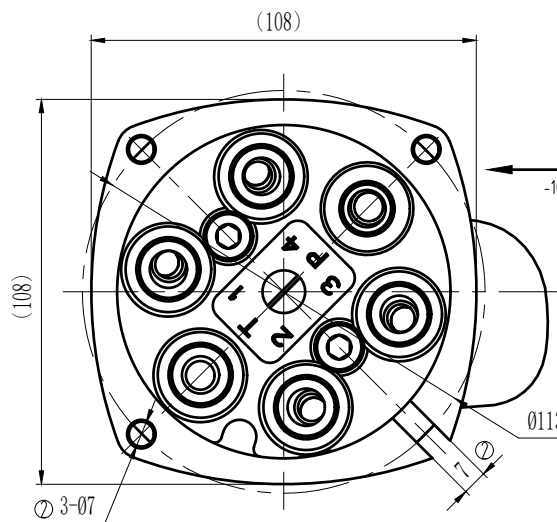


Hall output graph



Technical requirements:

1. Maximum pressure: 50 bar
2. Rated pressure: 35 bar
- 3, rated flow: 15 L/min
- 4, T mouth back pressure: 3 bar
- 5, button switch rating: 3A/28VDC (IP67)
- 6, Hall element rated voltage: 12VDC
7. Use oil: mineral oil
- 8, viscosity range: 10 ~ 380 mm<sup>2</sup>/s
- 9, oil temperature: -20℃ ~ 80℃
10. Cleanliness: NAS Level 9
- 11, oil port form: G1/4E0(O-ring seal)



				FPJ-V19-I4-L2			Ningbo Flag-up hydraulic
②	2	20220616-E01					
①	1	20210325-A01					
mark	number	changed	file number	signature	date		
designer			approver		pattern mark	weight	proportion
inspector							1:1
craft					version	IV	visual angle
standard			date				

left handle

810900239