

HYDRAULIC Filling Valve (pre-fill valve)

Model:81130377



Advantage

1. Two way oil
2. Significant Energy Efficiency
3. Increased Cycle Speed
4. Reduced Heat Generation
5. Shock Absorption and Decompression
6. Leak-Free High Pressure
7. Proportional Control
8. Accompany with cartridge valves

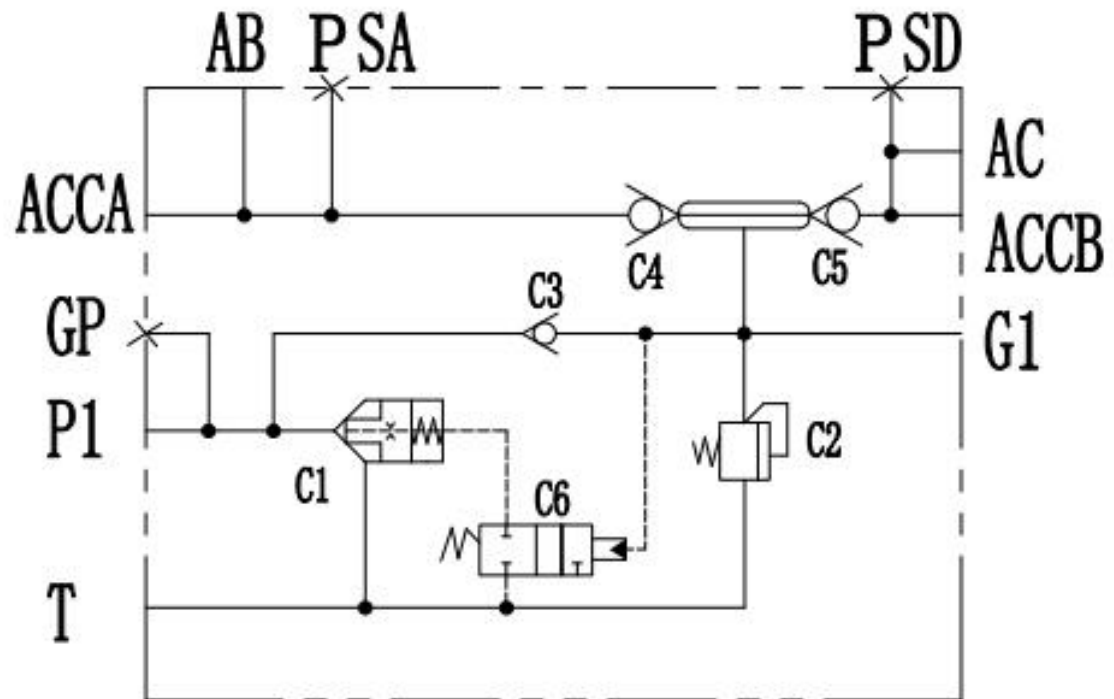
APPLICAGION

 EXCAVATORS	 BACKHOE LOADERS	 SKID STEER LOADERS	 BULLDOZER
 WHEEL EXCAVATORS	 WHEEL LOADERS	 DRILL RIG	others

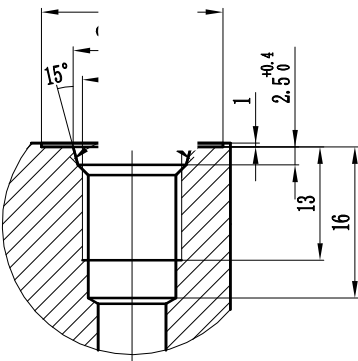
Technical Specifications

Maximum pressure:	210 bar
Secondary output pressure:	40±3 bar
Rated flow rate:	16.5L/min
Viscosity range:	10~380mm ² //s
Oil temperature:	-20°C ~95°C
Test temperature:	50°C ~ 5°C
Operating temperature range:	-30°C to +50°C
Overflow valve C2 preset pressure:	165± 3 bar

Hydraulic sybole&curve graph



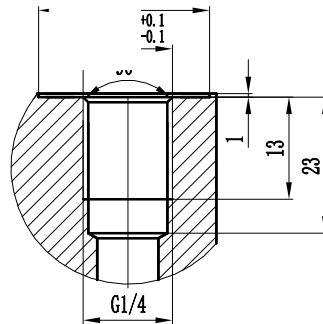
shape connector size



G1/4ED油口尺寸

PSA、GP、G1

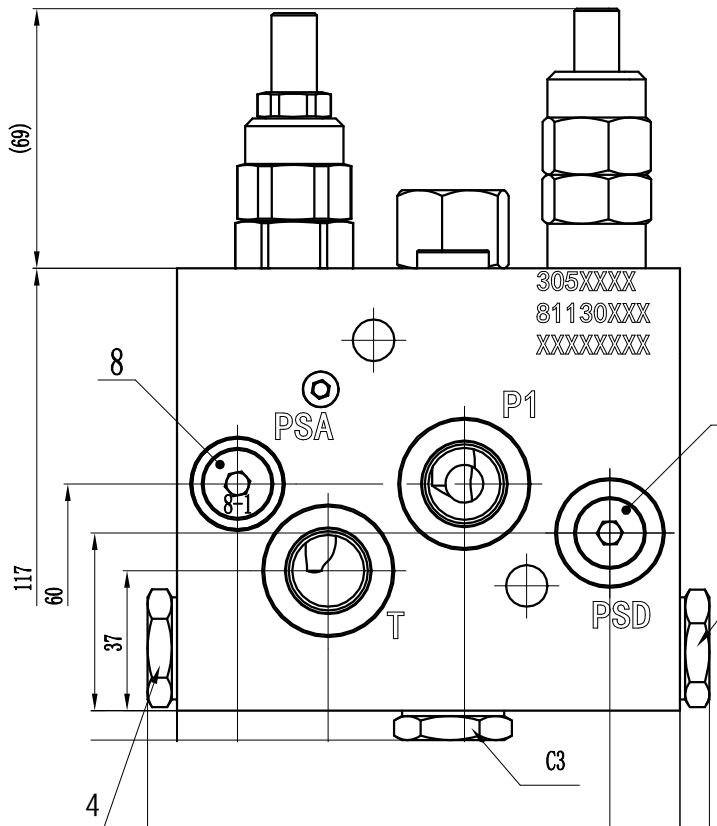
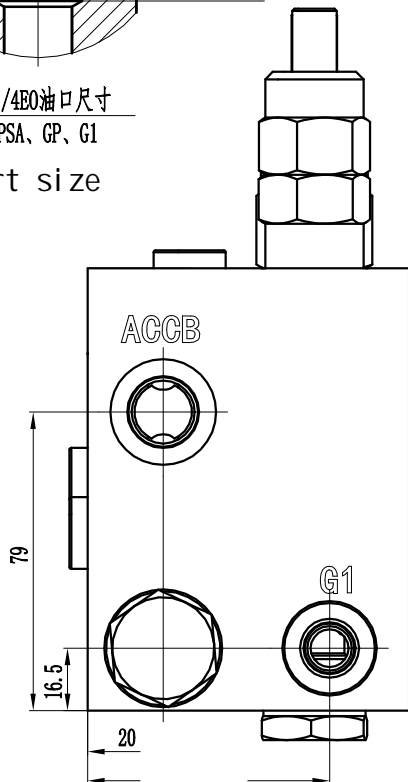
port size

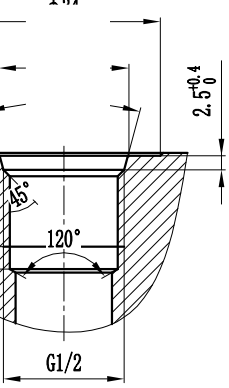


G1/4ED油口尺寸

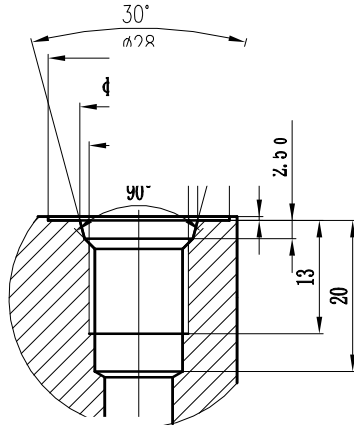
PSD

port size

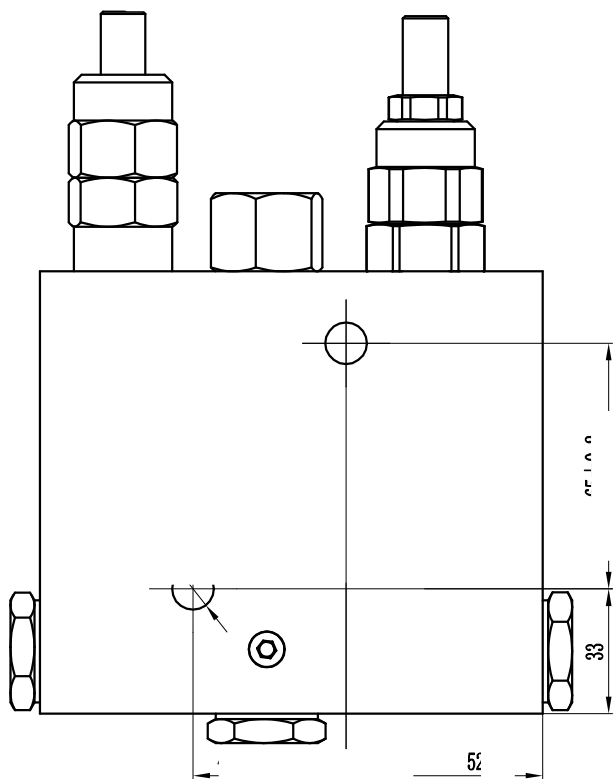
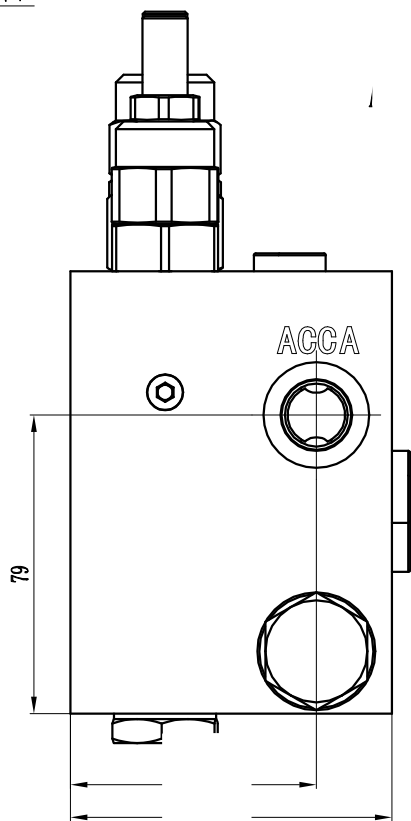




1/2 英寸孔型图



1 英寸
A, ACCB
size



for more details, please talk to us

