

Manifold block with accumulator & cartridge valve

Model: 811300064



Advantage

1. Leak Reduction
2. Compact Size
3. Serviceability
4. Energy Efficiency

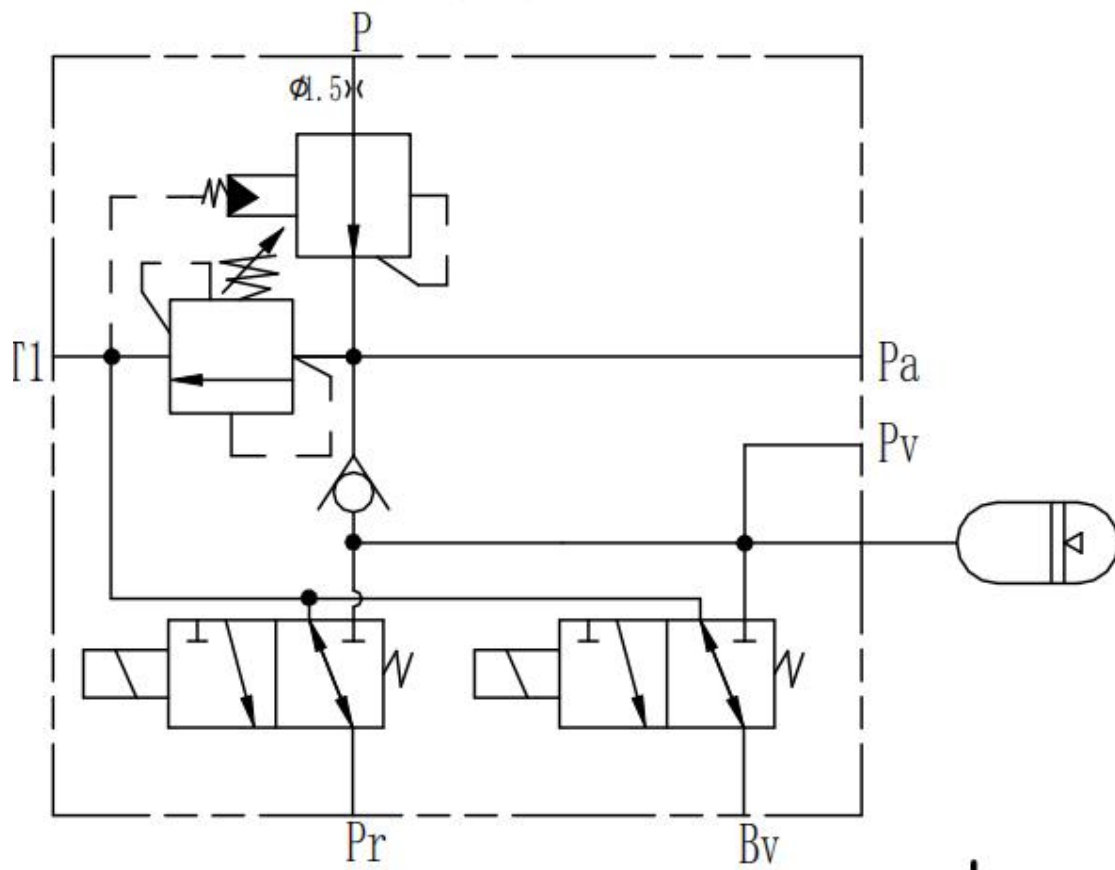
APPLICATION

						
EXCAVATORS	BACKHOE LOADERS	SKID STEER LOADERS	DUMP TRUCKS	BULLDOZER	GRADERS	WHEEL LOADERS
						AND OTHERS
MINI EXCAVATORS	ROLLER COMPACTOR	WHEEL EXCAVATORS	DRILL RIG	SHIP	AIRPLANE	

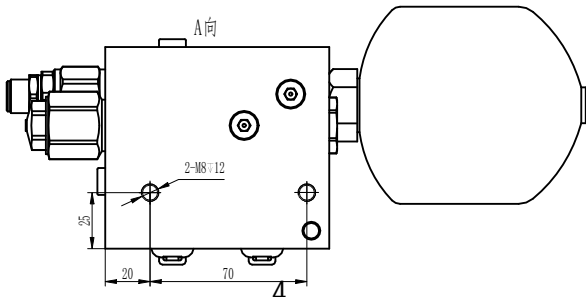
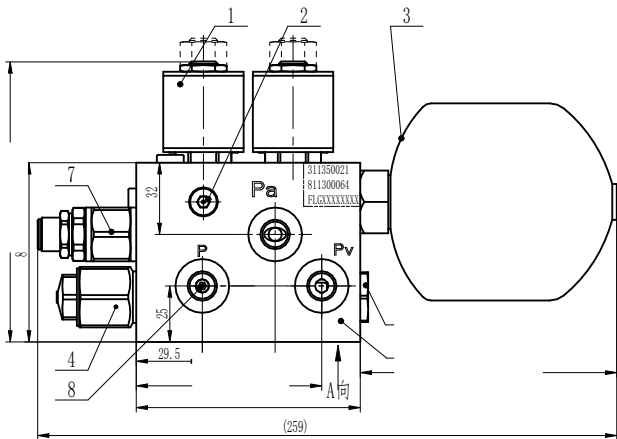
Technical Specifications

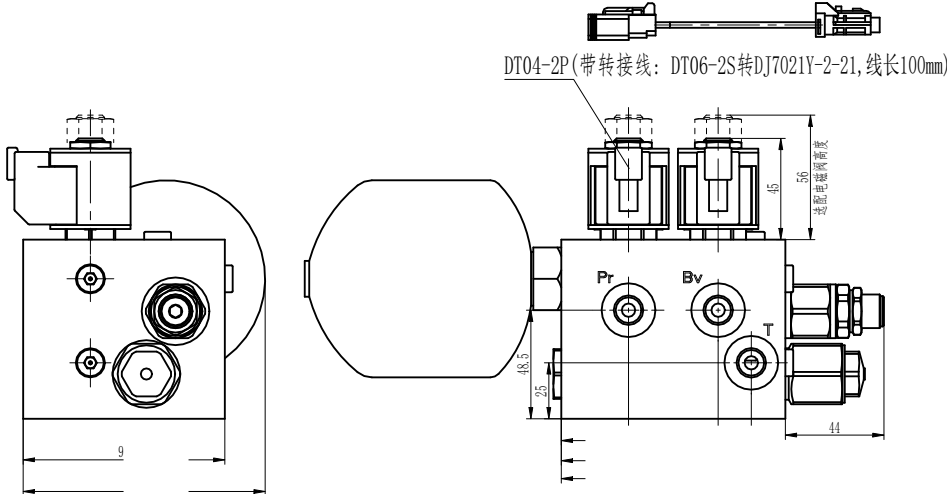
Maximum inlet pressure:	350 Bar
Maximum flow rate:	15 L/min
Relief valve set pressure:	45 Bar
All working ports:	G1/4ED
Accumulator capacity:	0.35L
pre-charge pressure:	1.5 MPa
Pressure reducing valve output pressure:	34~37 Bar
Solenoid valve operating voltage:	14+15% VDC
Pressure reducing valve installation torque:	40~50 N.m.
Note: Adjust the relief valve pressure before assembling the assembly!	

Hydraulic symbol



Shape connection size





For more details please talk to us