

## **Advantage**

1. Progressive, sensitive control
2. Precise and play-free control characteristics
3. Low actuation force at the lever
4. Rust-free plunger



## APPLICAGION

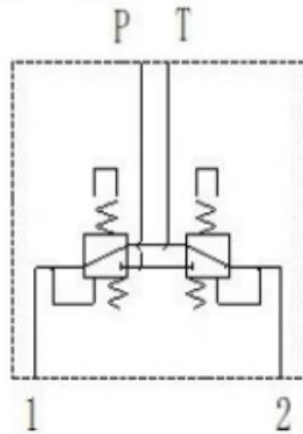
 <p>BACKHOE LOADERS</p>	 <p>DRILL RIG</p>
 <p>MINING EQUIPMENT</p>	<p>others</p>

## Technical Specifications

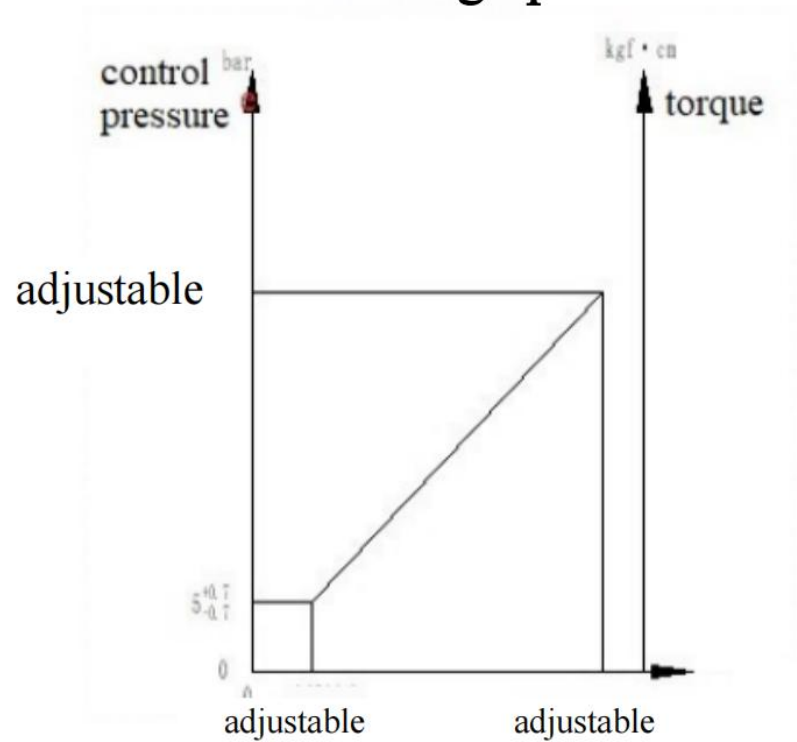
Maximum pressure:	100 bar
Rated pressure:	40bar
Maximum flow rate:	12L/min
Viscosity range:	10~380mm2//s
Oil temperature:	-20C~80°C

# Hydraulic sybole&curve graph

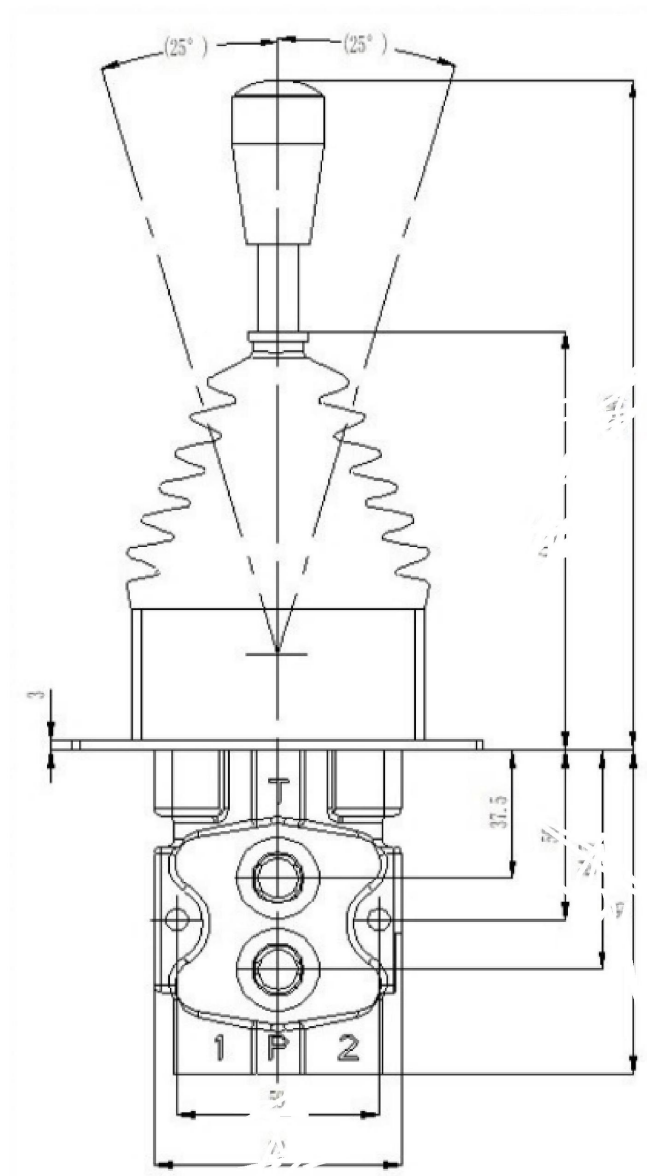
**Hydraulic symbol**

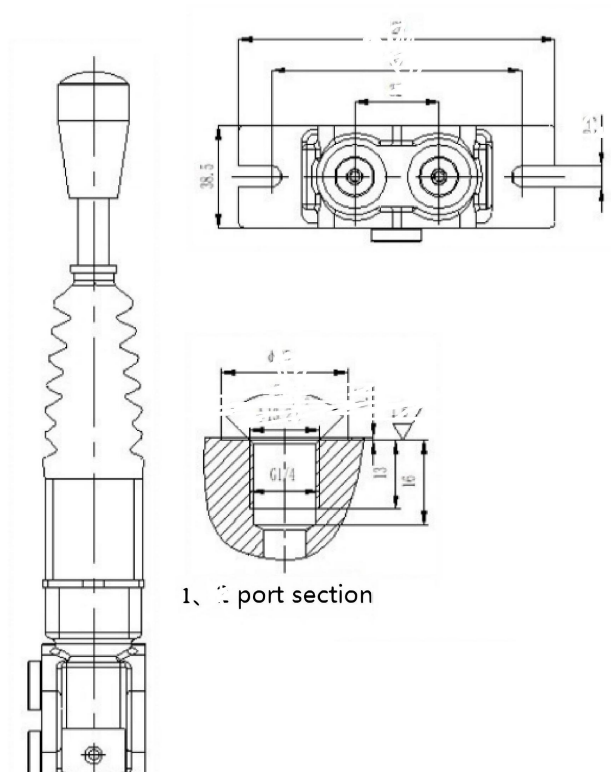


**curve graph**



## Shape connection size





**For more details, please talk to us immediately**