

Hydraulic Breaker Foot Valve

Model:81100065



Advantage

1. Multi-Function Coordination (Hands-Free)
2. Proportional Control ("Modulation")
3. Reduced Operator Fatigue
4. Durability in Harsh Environments



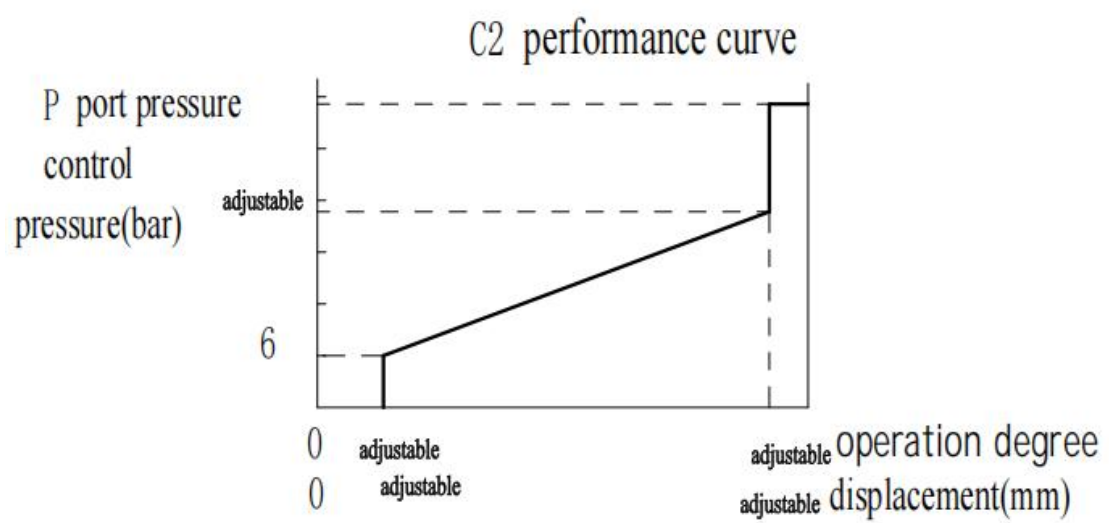
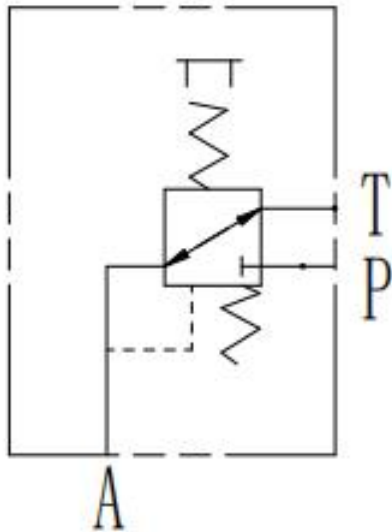
APPLICAGION

 <p>BACKHOE LOADERS</p>	 <p>DRILL RIG</p>	
 <p>MINING EQUIPMENT</p>	 <p>EXCAVATORS</p>	Others

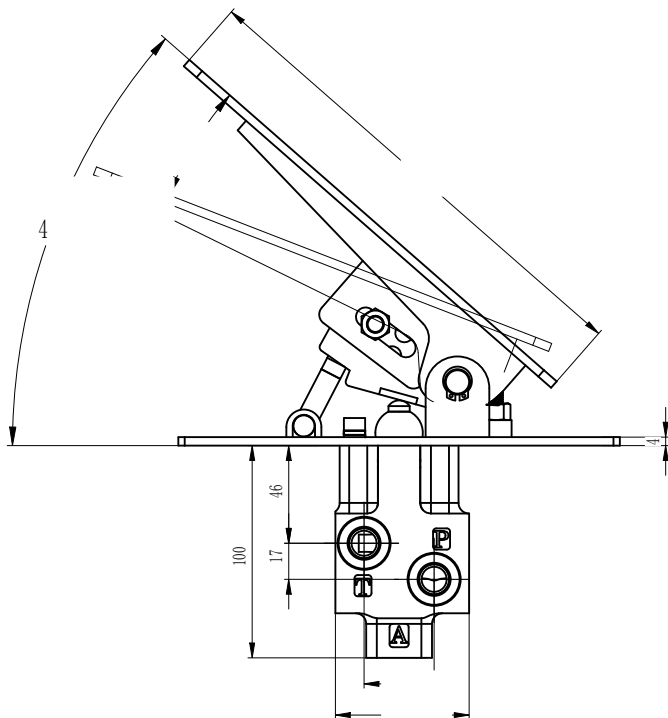
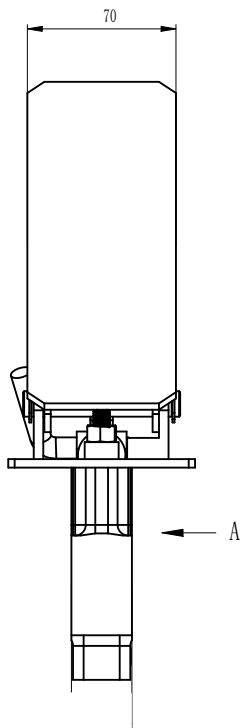
Technical Specifications

Maximum pressure:	50bar
Rated pressure:	40bar
Inlet flow rate:	20L/min
Viscosity range:	10~380mm ² //s
Oil temperature:	-20C~80°C

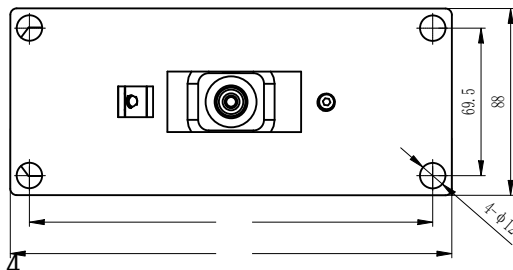
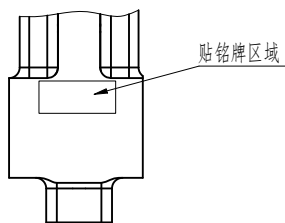
Hydraulic symbol

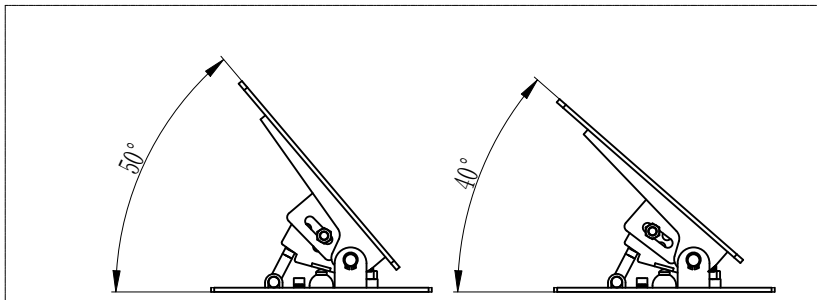


shape connection size



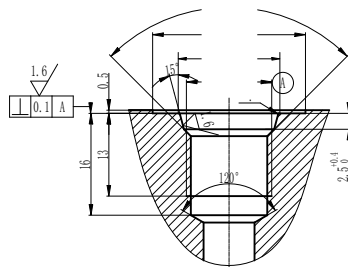
A向局部视图





The pedal angle can be adjusted according to the operator's height.

Oil orifice pattern diagram



for more details, please talk to us