



Advantage

1. Compliant with ergonomics
2. Hydraulic proportional output
3. Small hysteresis loop and high precision
4. Hall wheel
5. Electro hydraulic mutual control
6. Long electric life
7. Long mechanical life

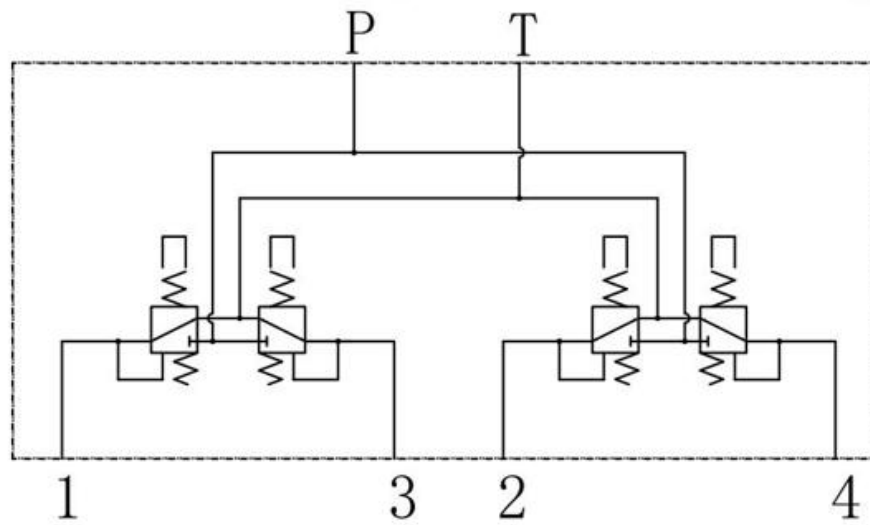
APPLICAGION

 BACKHOE LOADERS	 SKID STEER LOADERS	 WHEEL EXCAVATORS
 WHEEL LOADERS	 EXCAVATORS	others

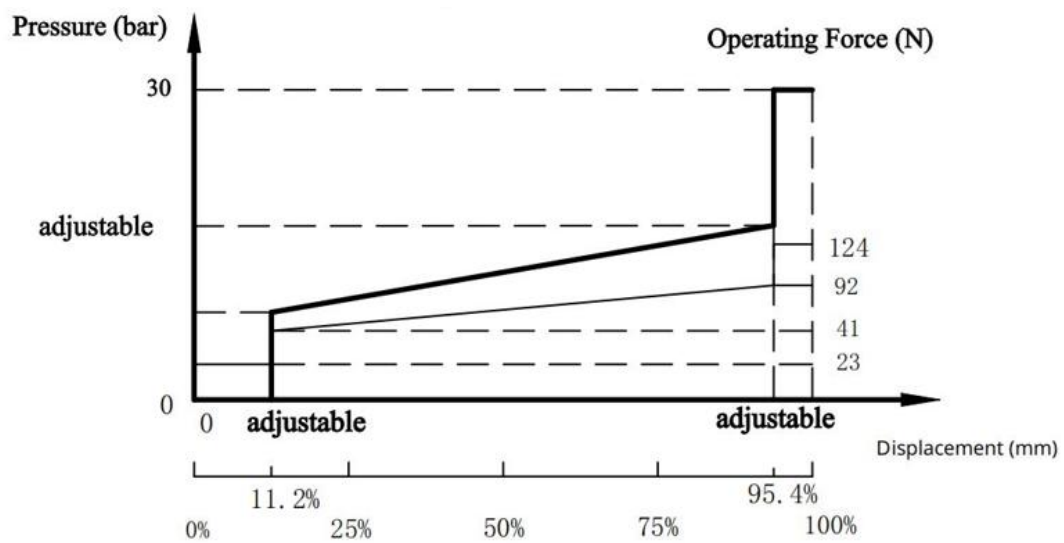
Technical Specifications

Maximum pressure:	100 bar
Rated pressure:	40bar
Maximum flow rate:	20L/min
Rated voltage of Hall element:	5VDC
Viscosity range:	3~400mm ² //s
Oil temperature:	-10C~80°C
Accuracy requirements for output voltage:	2.5±0.15V; 0.7 ± 0.05V; 4.3 ± 0.05V.
Electric life:	50,000 cycles
Mechanical life:	200,000cycles

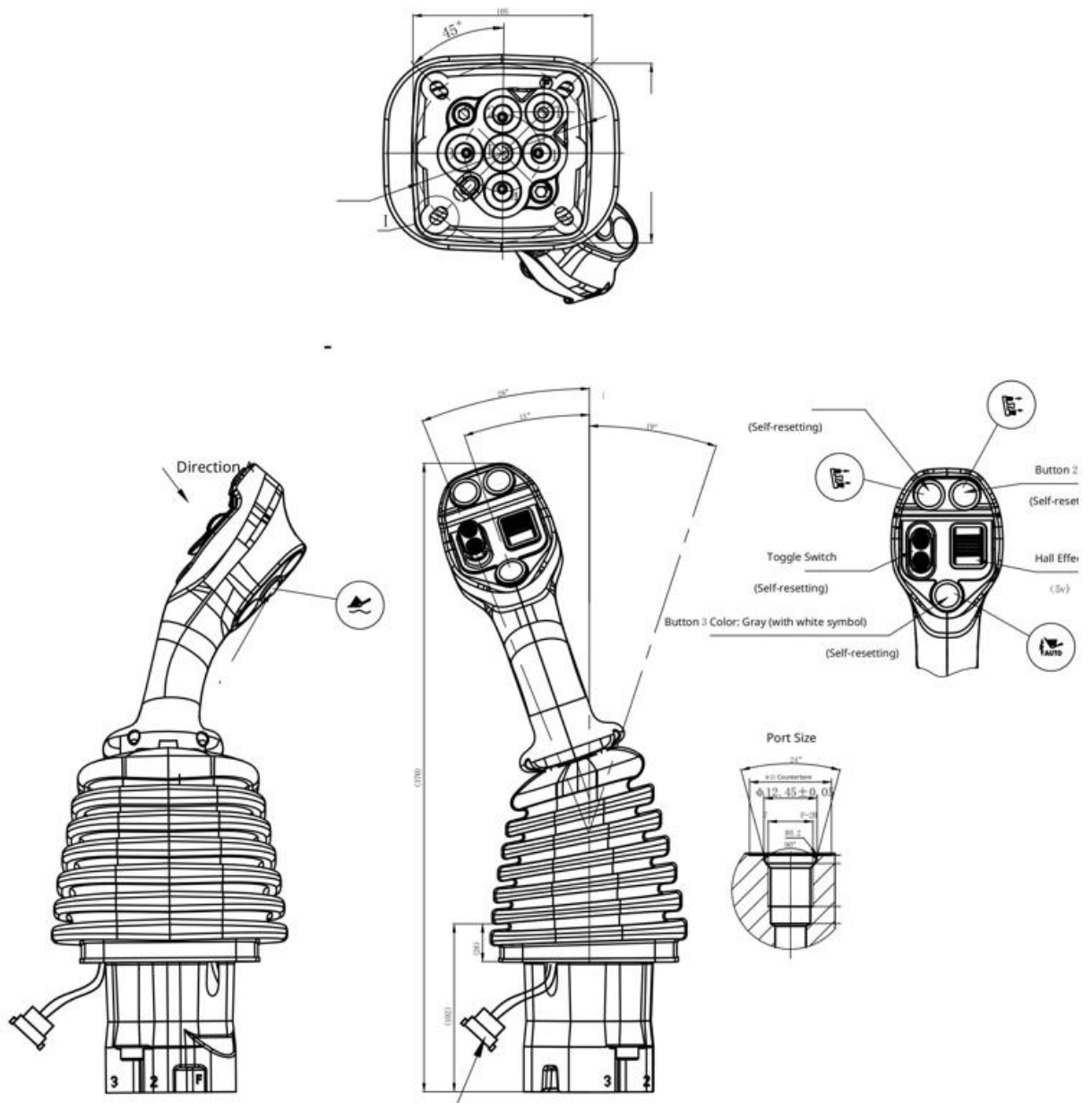
Hydraulic schematic diagram



metering curv-port



Shape connection size



For more details, please talk to us immediately