



HYDRAULIC PILOT REMOTE CONTROL VALVE FOR EXCAVATOR

Model:81090152

Advantage

1. Compliant with ergonomics
2. Multi-Axis Proportional Control
3. Ergonomic Precision
4. Integrated Auxiliary Controls
5. Progressive Spring Tension



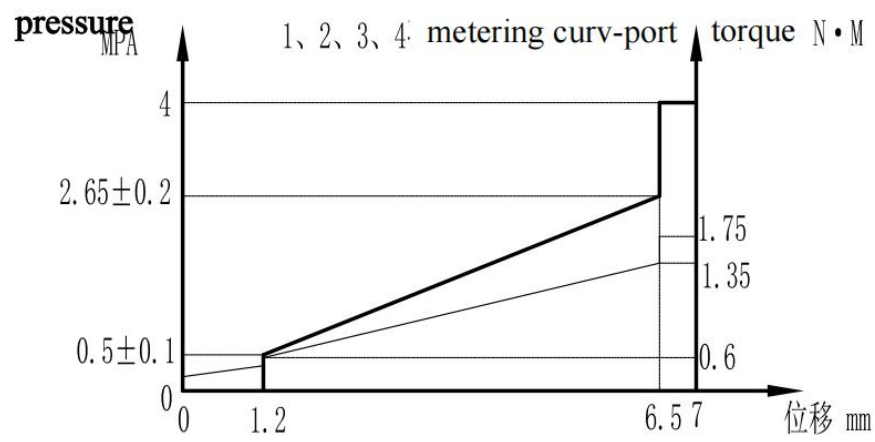
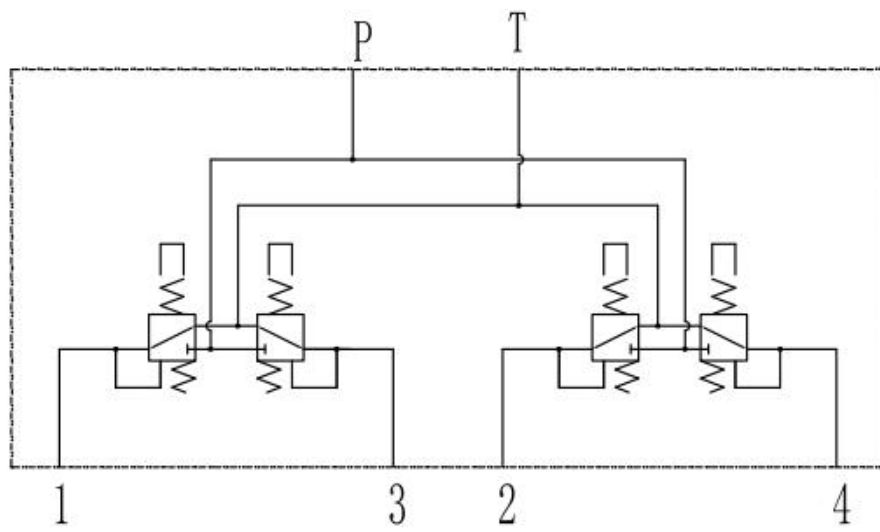
APPLICATION

 EXCAVATORS	 WHEEL EXCAVATORS
 MINI EXCAVATORS	others

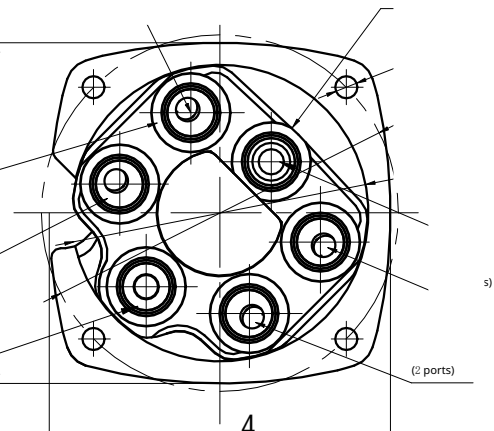
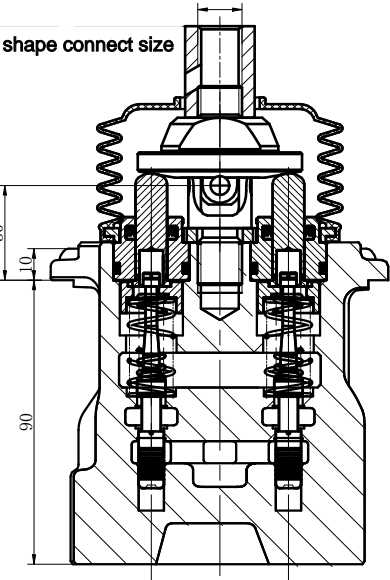
Technical Specifications

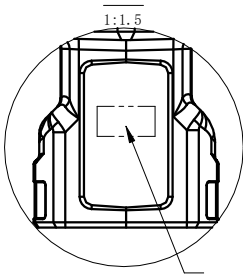
1. Prior to assembly, verify that each component meets quality standards.Ensure cleanliness level does not exceed NAS 9.2.
2. Perform assembly in accordance with the assembly operation instructions.
3. After assembly, inspect the product on the factory test bench according to the handle's factory test criteria.If the product passes inspection, affix the qualification label.I.
4. For products that pass testing, seal the oil port with a 9/16-18UNF rubber plugto prevent dust contamination.

Hydraulic schematic diagram

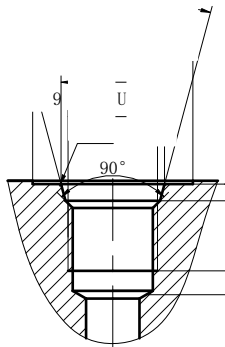


shape connect size





9/



for more details, please talk to us