



HYDRAULIC PILOT REMOTE CONTROL JOYSTICKS FOR EXCAVATOR

Model:810900250

Advantage

1. Compliant with ergonomics
2. Multi-Axis Proportional Control
3. Ergonomic Precision
4. Integrated Auxiliary Controls
5. Progressive Spring Tension



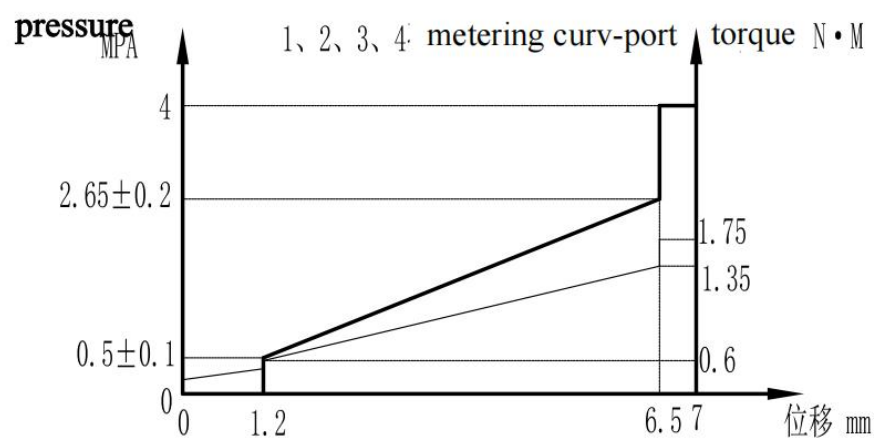
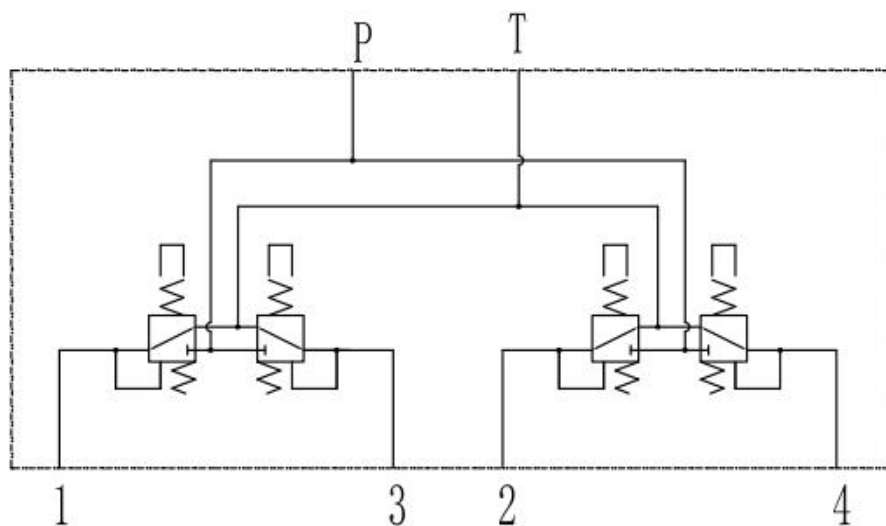
APPLICATION

| | |
|--|---|
|  EXCAVATORS |  WHEEL EXCAVATORS |
|  MINI EXCAVATORS | others |

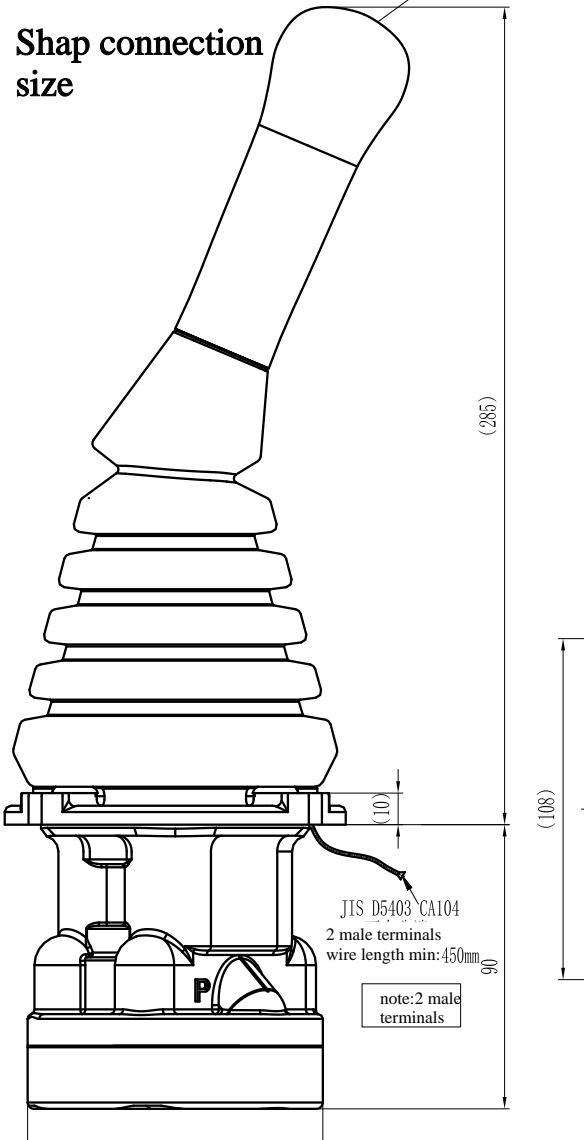
Technical Specifications

| | |
|--------------------|--------------------------|
| Maximum pressure: | 50 bar |
| Rated pressure: | 35bar |
| Maximum flow rate: | 15L/min |
| Viscosity range: | 3~400mm ² //s |
| Operating fluid: | Mineral oil |
| Oil temperature: | -20C~80°C |
| Viscosity range: | 3~400mm ² //s |

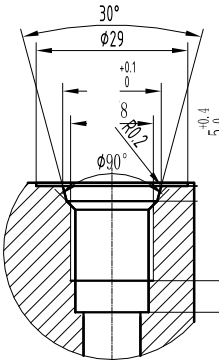
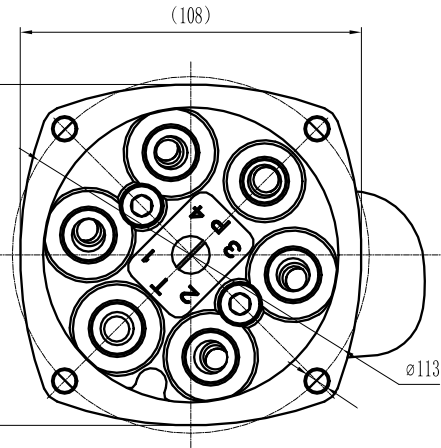
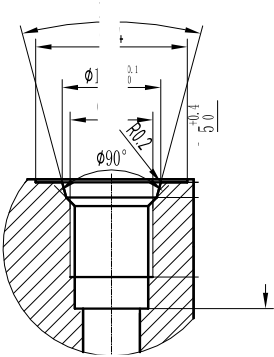
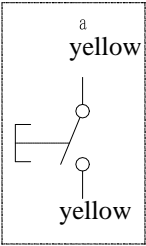
Hydraulic schematic diagram



Shap connection
size



switch connector



for more details, please talk to us
immediately